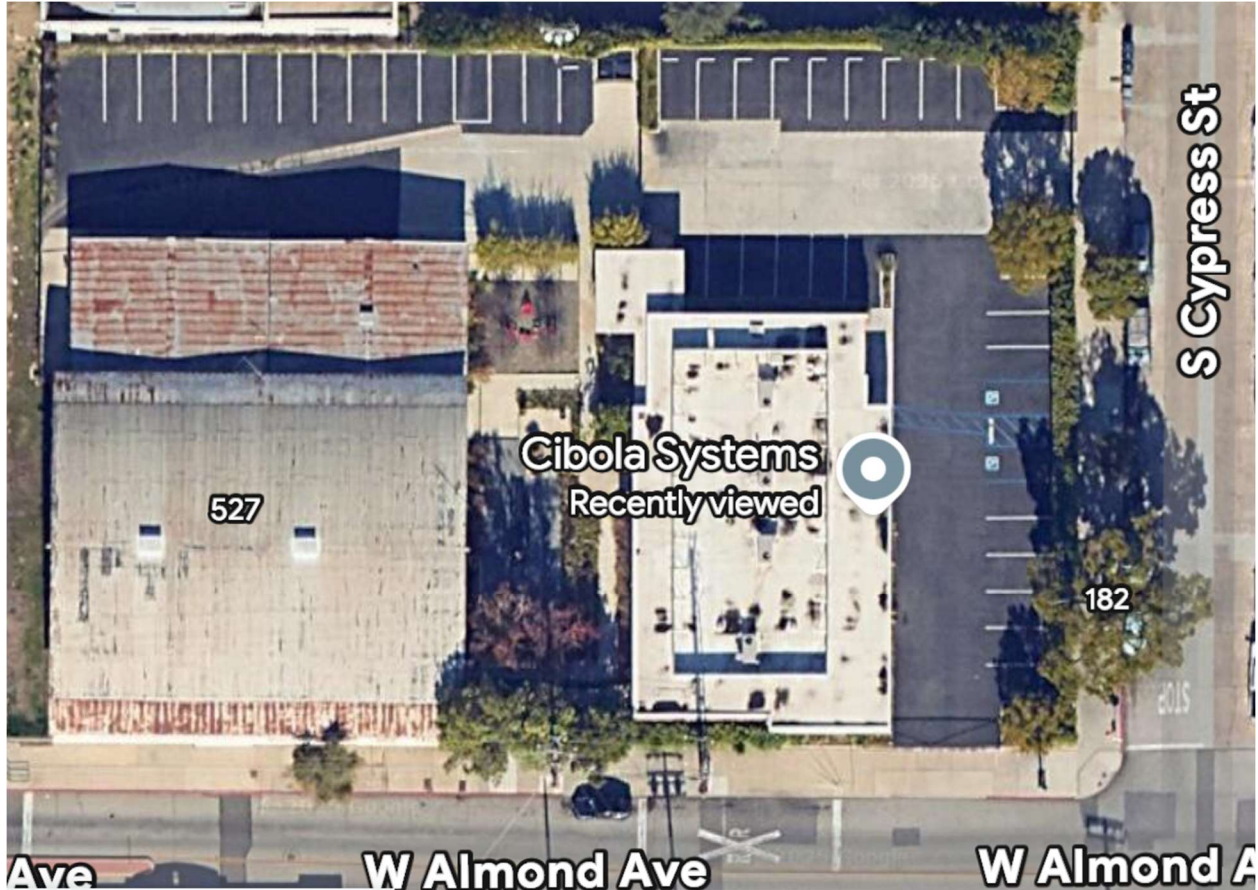


Friendship Church Tree Report

180 S. Cypress St., Orange CA 92866



Prepared for:

Gabriel Choi | Job Captain
AO Architects
321 W Chapman Ave. | Orange, CA 92866
714-639-9860

Prepared By:

Dustin R. Gilbert | Arbor Business Developer | RGS Landscape & Arbor Care
ISA Certified Arborist WE-12032A | Tree Risk Assessment Qualification | ASCA RCA#831
1156 North Grove Street | Anaheim, CA 92806
C 562.883.5667 | P 714.630.5300 | F 714.630.1330 | dgilbert@rgsls.com

Introduction

On January 15, 2025, I was contacted by Gabriel Choi from AO Architects in Orange, CA, to provide a tree report for a project at Friends Church, located at 180 S. Cypress. As an ISA Certified Arborist and Registered Consulting Arborist, I was asked to identify trees that should be protected according to city requirements, as well as assess the health and safety of the trees. Additionally, any necessary mitigation measures were to be outlined. While the contractor is coordinating replacement trees and plant materials, the specific species and locations were not available at the time of the inspection.

Evaluation Method

The trees were evaluated through a visual assessment to determine their structural condition and overall health. A soil probe was used to analyze soil composition, compaction levels, and moisture content. The species assessed include two Liquidambar, one Tangerine, one Lemon, four Crape Myrtles, two Tristania, and three Podocarpus.

Additionally, three Camphor trees are present on-site but are located in the parking lot outside the project area and will not be affected by the work being performed. A row of Podocarpus, no taller than five feet with a DBH of less than six inches, is planted along the building in a small raised planter on the south side. These trees are also not part of the project.

- **Root and Soil Conditions:** The trees exhibit excessive surface roots and are irrigated by drip tubing. The surrounding landscape consists of drought-tolerant grasses and succulents, with no mulch present. The soil appears to be a clay or sandy loam, with the top 4 inches observed to be dry.
- **Structural and Maintenance History:** The trees do not show evidence of structural pruning or regular maintenance. Some trees, particularly the Liquidambar, appear to have been topped in the past, resulting in large, unhealed wounds.
- **Decay and Health Observations:** The Liquidambar trees are likely to have internal decay in the main stem and root system, which may contribute to disease and pest susceptibility. Areas of wet bark with an alcohol-like odor were observed below wounds, potentially indicating decay or infection.

Project Summary

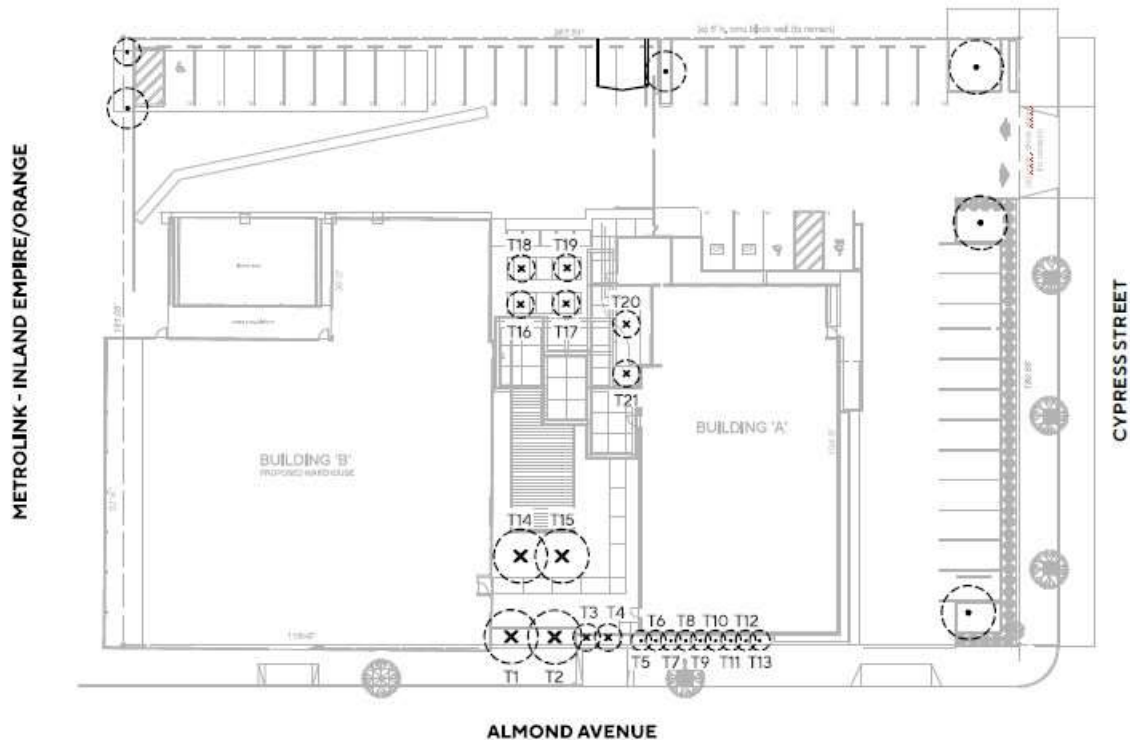
The area between the two buildings is planned for redevelopment, including the removal of raised planters and regrading to improve drainage and prevent flooding of the adjacent structure. These changes will impact the root structures of the existing trees, and as a result, the trees are intended to be removed and replaced with better-quality specimens suited for the updated landscape conditions.

Tree Matrix

#	Species	DBH (in.)	Height (ft.)	General Health	Condition Rating (Poor/Fair/Good)	Intent to Remove
T14	Liquidambar	12	20	Signs of decay in main stem and roots, large unhealed wounds from past topping cuts, wet bark with alcohol-like odor	Poor	Yes
T15	Liquidambar	12	20	Signs of decay in main stem and roots, large unhealed wounds from past topping cuts, wet bark with alcohol-like odor	Poor	Yes
T20	Lemon	8	8	No major structural defects observed, but lacks maintenance, dry soil	Fair	Yes
T21	Tangerine	8	6	No major structural defects observed, but lacks maintenance, dry soil	Fair	Yes
T16	Crape Myrtle	4	7	No major structural defects observed, but lacks maintenance, dry soil	Fair	Yes
T17	Crape Myrtle	4	7	No major structural defects observed, but lacks maintenance, dry soil	Fair	Yes
T18	Crape Myrtle	4	7	No major structural defects observed, but lacks maintenance, dry soil	Fair	Yes
T19	Crape Myrtle	4	7	No major structural defects observed, but lacks maintenance, dry soil	Fair	Yes
T1	Brisbane Box	10	15	Dry soil, Topped, located under power lines, moderate overall health	Fair	Yes
T2	Brisbane Box	10	15	Dry soil, Topped, located under power lines, moderate overall health	Fair	Yes
T3	Podocarpus	8	10	Limited observations on decay, moderate condition with no major defects	Fair	Yes

T4	Podocarpus	8	10	Limited observations on decay, moderate condition with no major defects	Fair	Yes
T5	Podocarpus	8	10	Limited observations on decay, moderate condition with no major defects	Fair	Yes

Site Map



Conclusion

All trees are to be removed in the project area, Landscape design and new plant material is to be selected and placed by the contractors hired. There are no trees to protect in place. RGS Landscape and Arborcare and I are not the coordinated landscape contractors, I was only hired to assess the project and provide a report as a Tree Professional.



Dustin Gilbert 1/31/2025