

CITY OF ORANGE
City Clerk's Office

Memo – Hot File

To: Honorable Mayor and Members of the City Council

From: Jennifer Connally, Deputy City Clerk

Through: Jarad Hildenbrand, City Manager

Date: September 8, 2025

Re: Agenda Item 5.1 – Consideration of a resolution adopting a position of
opposition to Proposition 50 on the November 2025 Special Election
Ballot (Bilodeau)

The City Attorney's office has submitted a reformatted resolution for consideration with no changes made to the proposed language.



RESOLUTION NO. XXXXX

**A RESOLUTION OF THE CITY COUNCIL
OF THE CITY OF ORANGE, ADOPTING
A POSITION OF OPPOSITION TO
PROPOSITION 50 ON THE NOVEMBER
2025 BALLOT**

WHEREAS, Proposition 50, appearing on the November 2025 California ballot, proposes to amend the California Constitution to alter the process for drawing congressional districts; and

WHEREAS, the current process, established by voters, assigns the responsibility for drawing congressional districts to the independent California Citizens Redistricting Commission, designed to operate in a non-partisan manner; and

WHEREAS, Proposition 50 would transfer the authority to draw congressional districts from the California Citizens Redistricting Commission to the State Legislature; and

WHEREAS, the independent California Citizens Redistricting Commission was created to ensure fair and impartial district boundaries, including safeguards to keep cities, counties, and local communities together; and

WHEREAS, Proposition 50 would remove existing safeguards intended to maintain the integrity of local communities in the redistricting process; and

WHEREAS, Proposition 50 proposes dividing communities, forcing some cities and counties to be split among multiple congressional districts under the measure's new maps and diminishing their voice in Congress; and

WHEREAS, the City Council of the City of Orange recognizes the importance of maintaining a transparent and independent redistricting process to uphold public trust in electoral systems; and

WHEREAS, the City Council of the City of Orange believes that Proposition 50 undermines the voter-approved framework for fair redistricting in California;

NOW, THEREFORE, BE IT RESOLVED that the City Council of the City of Orange, California, hereby adopts an official position of opposition to Proposition 50 on the November 2025 ballot.

ADOPTED this ____ day of _____, 2025.

Daniel R. Slater, Mayor, City of Orange

ATTEST:

Pamela Coleman, City Clerk, City of Orange

APPROVED AS TO FORM:

Wayne W. Winthers
Interim City Attorney, City of Orange

STATE OF CALIFORNIA)
COUNTY OF ORANGE)
CITY OF ORANGE)

I, PAMELA COLEMAN, City Clerk of the City of Orange, California, do hereby certify that the foregoing Resolution was duly and regularly adopted by the City Council of the City of Orange at a regular meeting thereof held on the ____ day of _____, 2025, by the following vote:

AYES:	COUNCILMEMBERS:
NOES:	COUNCILMEMBERS:
ABSENT:	COUNCILMEMBERS:
ABSTAIN:	COUNCILMEMBERS:

Pamela Coleman, City Clerk, City of Orange

September 9, 2025 City Council Meeting

PowerPoint Presentations

City Council

September
2025



Young Life Orange

showing up for kids right where they are



Over 40% of Gen Z

doesn't feel worthy of being loved.



More 75% of Gen Z

believe they can make a difference in the world



50% of Teens and Young Adults

are stressed by school and finances.



Almost 4 in 10 Gen Zers

around the globe are concerned with mental health



Over 33% of Gen Z

turn to social media when they're feeling anxious.



statistics found from Young Life's
RELATE Project. Explore more by
scanning the QR code!

showing up for kids right where they are

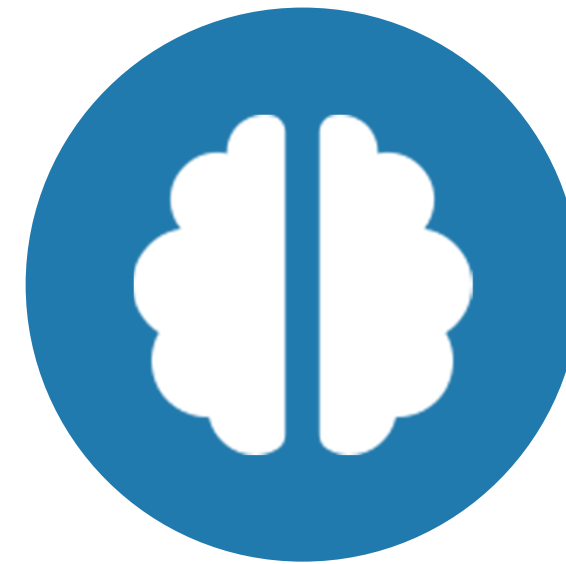
GenZ wants to be known for
being:



Loyal



Responsible



Calm



Good



statistics found from Young Life's
RELATE Project. Explore more by
scanning the QR code!

3 needs of GenZ where Young Life makes an impact

1

**THEY NEED
RELATIONSHIPS**

2

**THEY NEED
CONNECTION**

3

**THEY NEED
HOPE**

how Young Life is meeting kids on their turf



contact work

Going Where Kids Are



club

Celebrating Relationships



campaigners

Discovering the Word Together



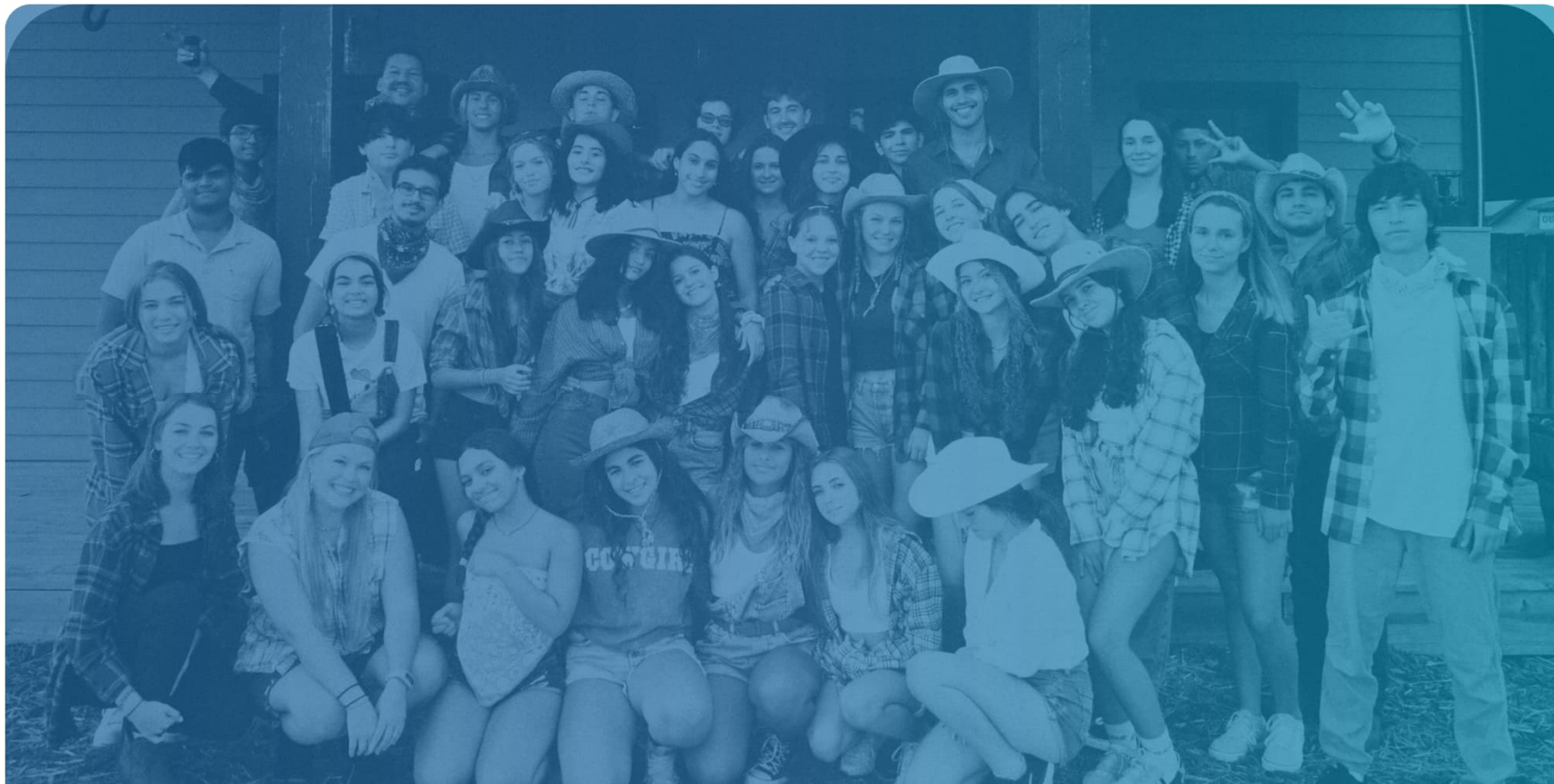
camp

Heaven on Earth



committee

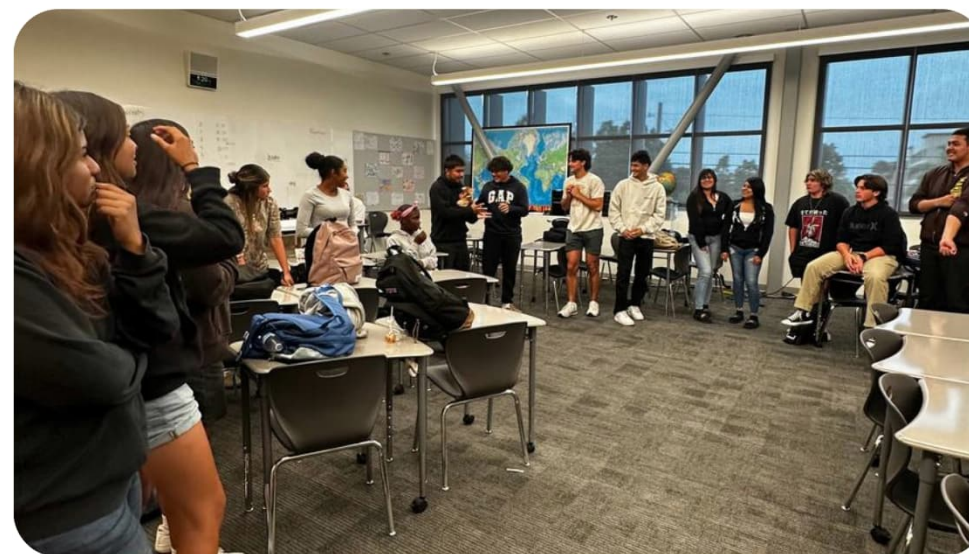
Like-minded Adults Who Work Alongside Us



contact work



club



campaigners



camp



committee



Meet Ju





our area

Orange

Current Ministries

- Orange High School
- Chapman University / Young Life College OC

Where do we want to go next?

- Villa Park High School
- Yorba Middle School

& Every High School + Middle School in Orange!!!

budget

Young Life Orange

2024 Annual Budget

Lydia's Salary + Benefits

Full-time Chapman Staff!
On campus weekly, leading students
& team leader of Chapman.
Lydia knows 200+ students by name
and mentors 50+ students through
weekly events & 1-on-1's.

\$87,000

Salaries - Other

Salaries for our admin. & Next Generation
Leaders - a part-time staff program
intended to raise up leaders of color.

\$45,000

Mission Services

HR, mission leadership, IT, regional
leadership, communications, legal, etc.

\$29,000

Office

Rent, WiFi, & office expenses

\$10,000

\$15,000

Program + Operational Expenses

Leadership meetings, leader background checks,
events, clubs, campaigners, coffee dates, etc.

\$186,000 Budget

partner with us

Pray With Us

Pray for our leadership, volunteers, kids and the next kid to know Jesus!

Serve With Us

- Join our Committee
- Be a Volunteer Leader
- Host Club or Breakfast Campaigners
- Care for our leaders and kids

Give to Us

[Giving.younglife.org/orange](https://giving.younglife.org/orange)



thank you

Follow Us On Social Media

@orangehighyounglife

@chapmanyounlife



City Council Presentation

534 Struck Ave. Orange, CA
Orange Industrial Center #6

Prepared for



Prologis At-A-Glance



1983

Founded

100

Global most sustainable corporations

PLD

NYSE, S&P 500 member

1.3 BSF

20 countries / four continents

#2 in Solar

Rank in U.S. for onsite solar installations, SEIA

6,500

Customers

A2/A

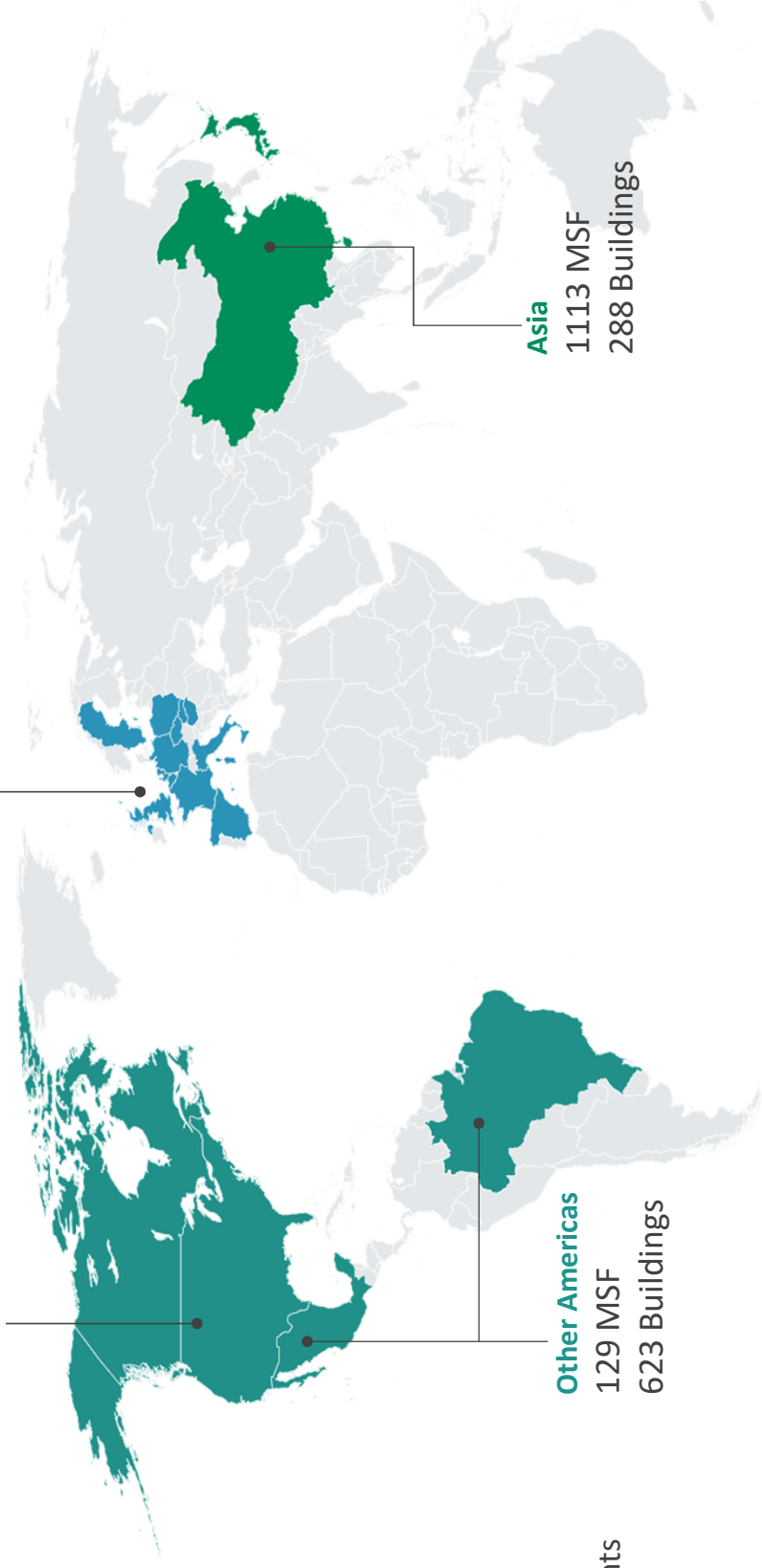
Credit rating

Europe
251MSF
1,151 Buildings

U.S.
800 MSF
3,822 Buildings

Asia
1113 MSF
288 Buildings

Other Americas
129 MSF
623 Buildings



Southern California (OC, LA, IE)

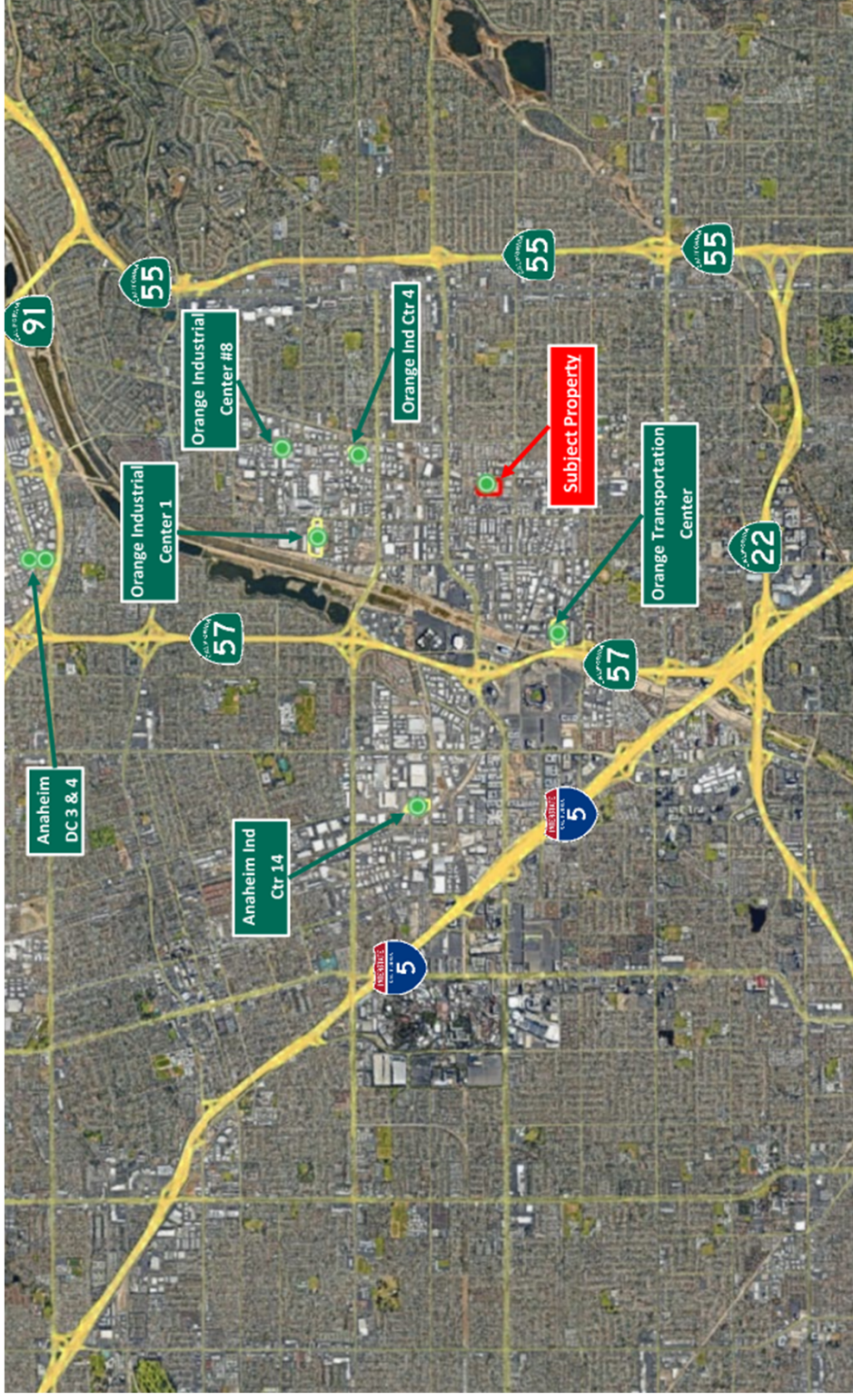
548 buildings, 717 customers, 126.2 MSF, 8,000 acres

Orange County

67 buildings with 49 customers, 7.8 MSF, 495 acres

City of Orange

5 buildings with 4 customers, 2.3 MSF, 52 acres



SUSTAINABILITY AND COMMUNITY

RECENT ORANGE COMMUNITY INVOLVEMENT

- Home Aid
- The Hub OC
- Santiago Canyon College
- Love Orange
- Orange International Street Fair

TIME

WORLD'S MOST SUSTAINABLE COMPANIES

IN PARTNERSHIP WITH statista

2024

WE ARE HONORED TO BE INCLUDED ON TIME AND STATISTA'S

WORLD'S MOST SUSTAINABLE COMPANIES AWARD LIST

SUSTAINABILITY		COMMUNITY			
Global Solar Footprint	California Solar Footprint	Number of Buildings with Solar Arrays	California EV Charging Station Footprint	LED Lighting Energy Installation	Buildings with Certification (e.g. LEED)
340 MWp	220 MWp	194 Buildings	30 Properties	42% of Portfolio	740
COMMUNITY		CWI Participants	Space for Good Donation	Charitable Contributions	Racial Equality Contributions
13,000+	\$10,200,000	\$4,500,000	\$1,500,000	50+	Employee Volunteer Hours (since 2019)
					33,000



Prologis is committed to achieve Net-Zero emissions in our operations (by 2030) and across our value chain (by 2040):

100% carbon neutral construction by 2030

- Carbon reduction in construction materials
- LEED Silver certification minimum
- 30-year roof systems and 5 PSF collateral load for solar ready
- Upgraded “micro-grid” electrical switchgear
- Advanced (smart) metering of house and tenant electric meters
- 100 % LED lighting in warehouse and offices space
- Efficient HVAC equipment in the office
- EV charging for auto and trucks
- Whole Building Life Cycle Assessments to record carbon impacts



COMMUNITY ENGAGEMENT



Prologis team donated gift bags to the Home Aid Holiday Gift Drive in December 2024



Prologis team sponsored the Home Aid Project Playhouse event Oct. 2024.



Prologis team at the Home Aid Diaper Drive in May 2025



Prologis team attended the Santiago Canyon College Career Day Oct. 2024



July 18, 2025

City of Orange
Planning Commission
300 E. Chapman Avenue
Orange, CA 92666

Sent via email 07/18/25

Dear Planning Commissioners,

I am writing to express my enthusiastic support for the warehouse project that Prologis is proposing in the City of Orange.

Over the years, the Prologis team has consistently demonstrated a strong commitment to the communities in which it operates. In Orange, that commitment has been evident through meaningful contributions to organizations like HomeAid OCIA and the Hub OC. Prologis team members have active participation in fundraising events, and direct support of our facilities through community engagement.

In addition to sponsoring our annual gala for several consecutive years, the Prologis team has volunteered their time to help clean local facilities and donated materials for both our Holiday gift drive and our annual diaper drive. Prologis has proven to be more than just a business - it is a dedicated and valued community partner.

The proposed warehouse project not only promises to create jobs and stimulate local economic growth but also reflects Prologis's ongoing tradition of being a responsible and engaged corporate neighbor. We are confident that this development will be executed with thoughtfulness and care.

I respectfully urge the Planning Commission to approve this project, as it will provide lasting benefits for our city and its residents. I am personally in support of this as a City of Orange resident and business leader in our community.

Sincerely,



Gina R. Cunningham
Executive Director

Resident: 231 North Cambridge Street
Orange, CA 92666

LONG-TERM ECONOMIC BENEFIT

Offsite Infrastructure Improvements:

- Upgrading existing pavement on Struck Ave. (from the Cul de sac to Batavia)
- Installing new sidewalk, curb and gutter, and landscaping along Struck Ave. frontage

Jobs:

- Creation of 120 ~200 direct well-paying local jobs
- Creation of union construction jobs

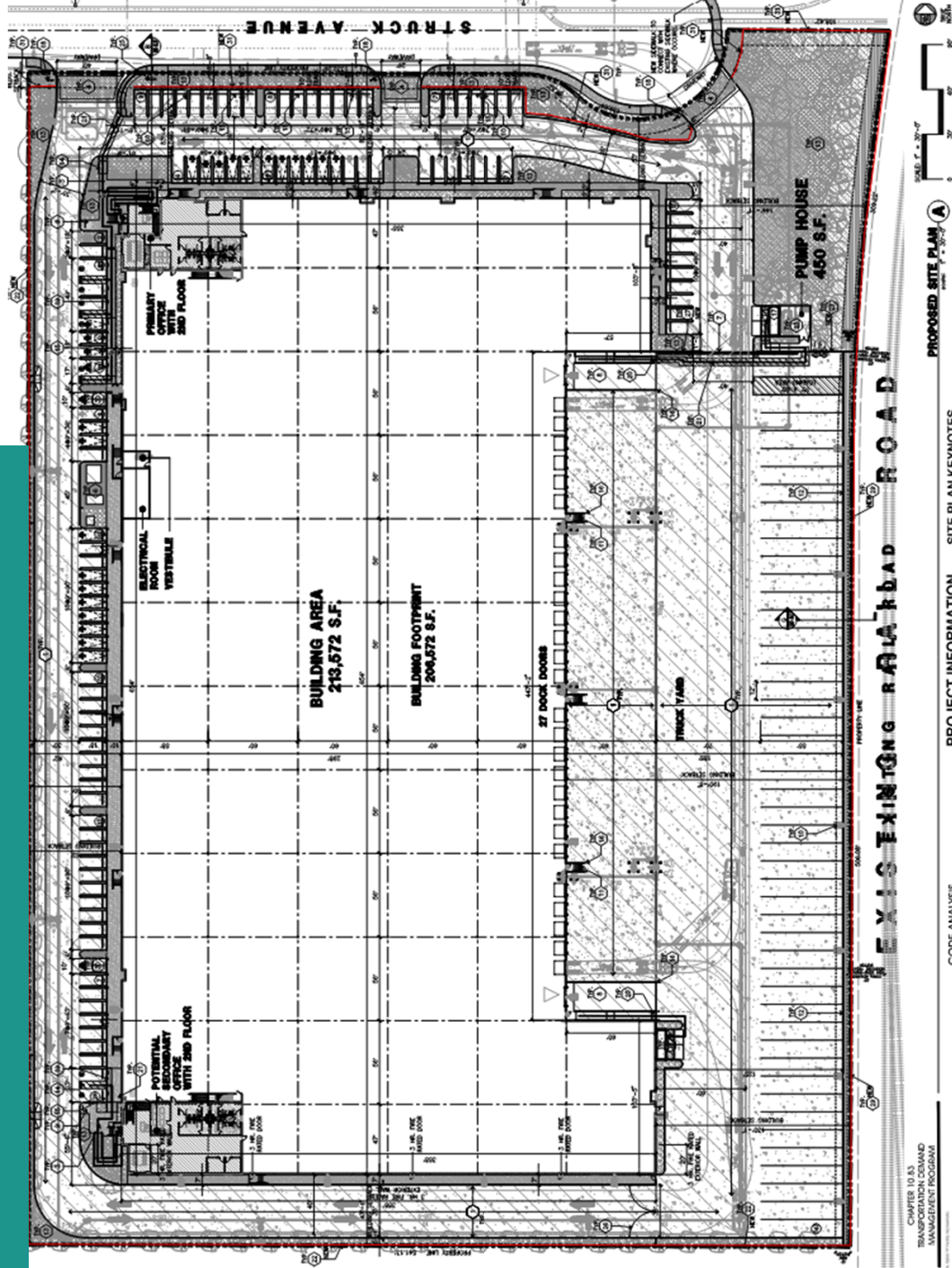
Fiscal impact to the city's general fund:

- Property taxes
- Sales taxes
- Permit and development fees
- Annual taxes





OPTIONAL SLIDES

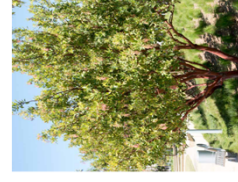


Changes from the DRC review:

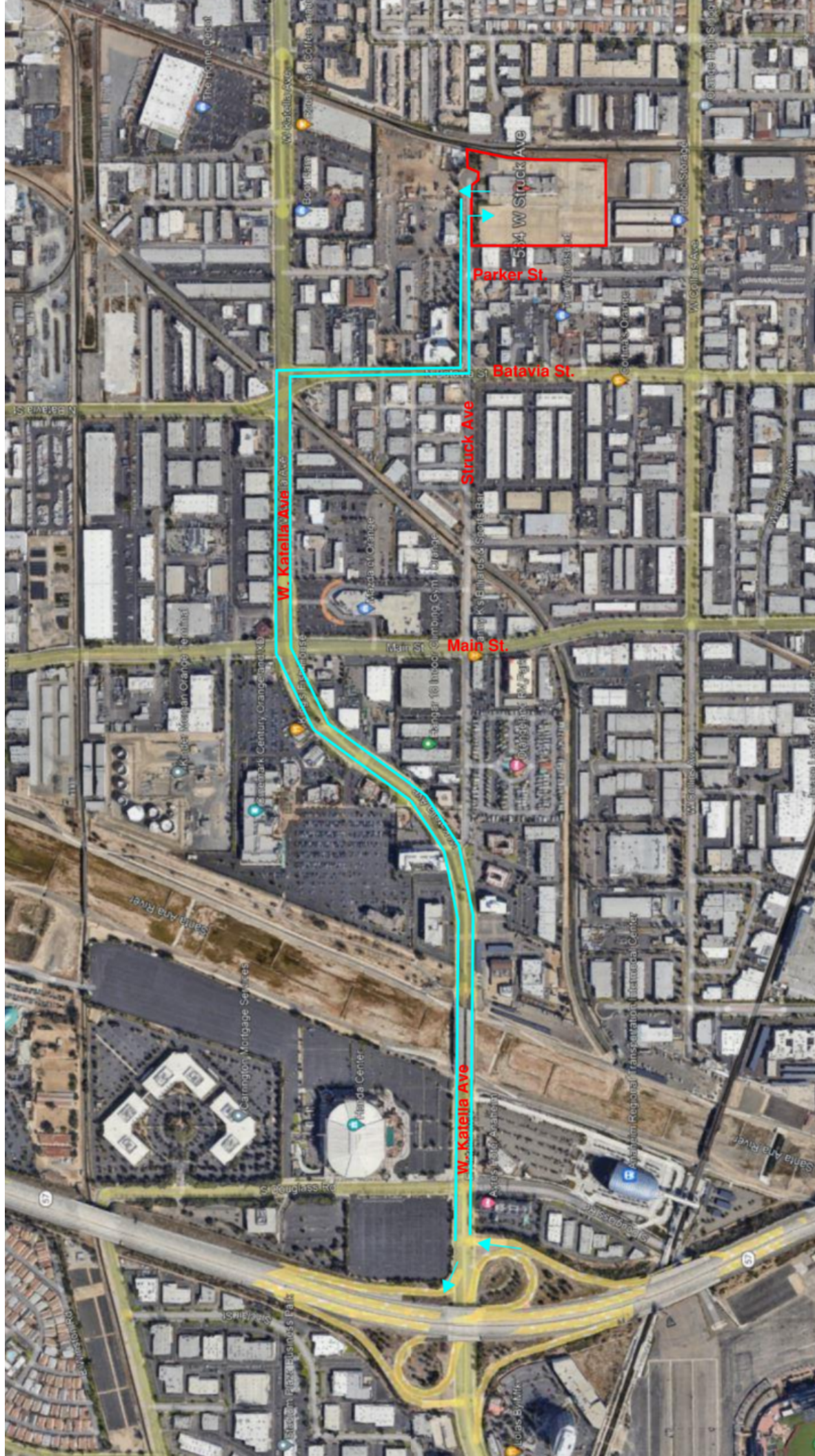
- 6' fence facing Struck Ave relocated to behind of the landscape area

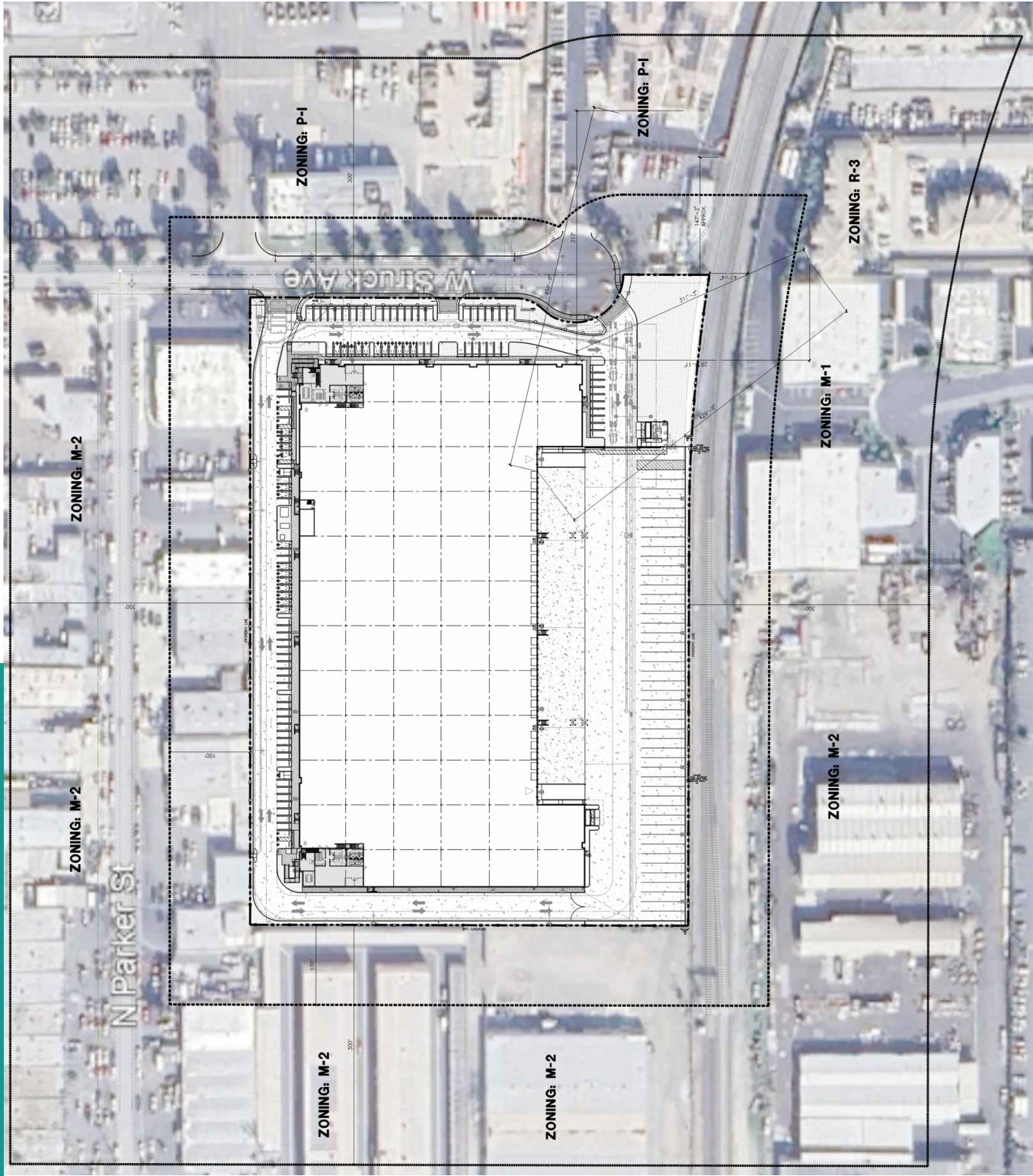


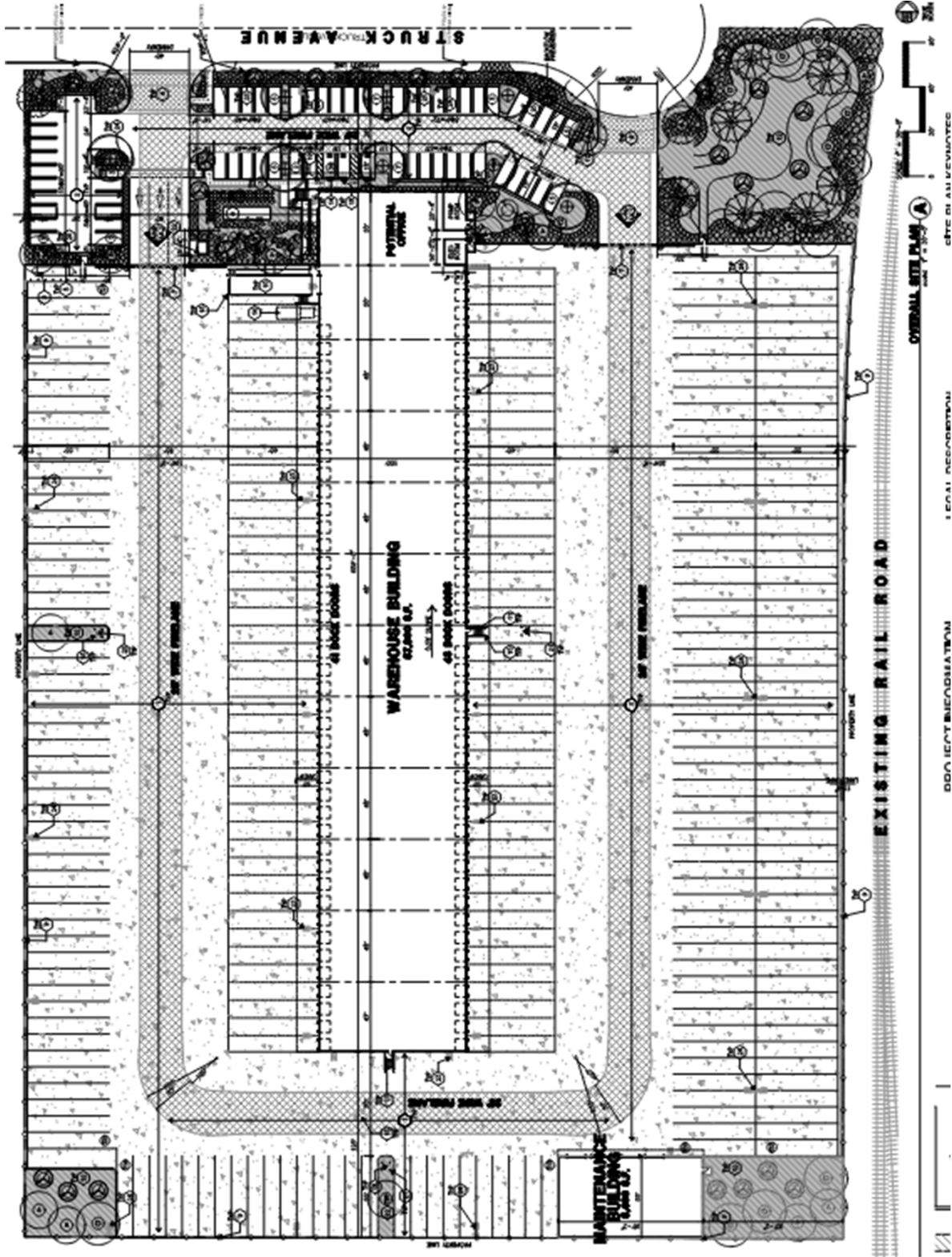
TREES



- Changes from the DRC review:
- Trees at the entries upsized to 36"
 - Drought resistant trees and shrubs proposed







TABULATION

SITE AREA	In s.f.	432,780 s.f.
	In acres	9.94 ac
BUILDING AREA	Office	5,000 s.f.
	Warehouse	52,900 s.f.
TOTAL		57,900 s.f.
Maintenance Building		5,400 s.f.
	TOTAL	63,300 s.f.
COVERAGE		14.6%
AUTO PARKING REQUIRED	Office: 1/250 s.f.	20 stalls
	Whse: 1/2,000 s.f.	27 stalls
	TOTAL	47 stalls
AUTO PARKING PROVIDED	Standard (9' x 18')	59 stalls
	Accessible (9' x 18')	2 stalls
	Accessible (12' x 18')	1 stalls
	TOTAL	62 stalls
TRAILER PARKING PROVIDED	Trailer (10' x 55')	188 stalls
ZONING ORDINANCE FOR CITY	Zoning Designation - Industrial (M-2)	
	MAXIMUM BUILDING HEIGHT ALLOWED	14.6% - 40'

Approved Truck Terminal Design





Consultant Team:

- Architect: HPA
- Civil Engineer: Webb
- Landscape: Hunter
- CEQA: T&B Planning

1. Who is Prologis?
2. Our Sustainability Practice
3. Benefits that We are Bringing to the Community



COMPREHENSIVE CITYWIDE FEE STUDY RESULTS

CITY OF ORANGE, CALIFORNIA

MATRIX
CONSULTING GROUP

BACKGROUND / INTRODUCTION

- City last conducted a fee study in 2018.
- Best practice is to conduct Fee Studies every 5-7 years.
- Developed a Full Cost Allocation Plan to capture the indirect costs associated with fee-related services.
- Compliance with state regulations.



STUDY OBJECTIVES



STREAMLINE FEE STRUCTURE

Consolidate, Expand, Add / Remove Fees



LEGAL COMPLIANCE

Compliance with Prop 218 & 26



TIME ASSUMPTIONS

Identify the average level of effort associated with activities



COMPARATIVE SURVEY

Benchmark against other jurisdictions



FULLY BURDENED HOURLY RATES

Determine direct and indirect costs



MASTER FEE SCHEDULE

Provide all existing and proposed fees in a comprehensive manner



FEE CALCULATION METHODOLOGY



- Average staff time by position title spent per permit, application, or fee-related activity.
- Salaries, Benefits, Productive Hours, Services & Supplies, Supervisory Support, and Citywide Overhead from Cost Allocation Plan.
- Maximum justifiable fee that can be assessed



FEE STUDY RESULTS

- Reviewed 694 fee line items – across all City Departments
- Added new flat fees for building services, but retained the detailed occupancy, square footage, and construction type fees for new construction / tenant improvements.
- Added new flat fees for Planning services for administrative services that don't require deposits.
- Consolidated Community service fee categories to streamline the rentals but also capture programming.

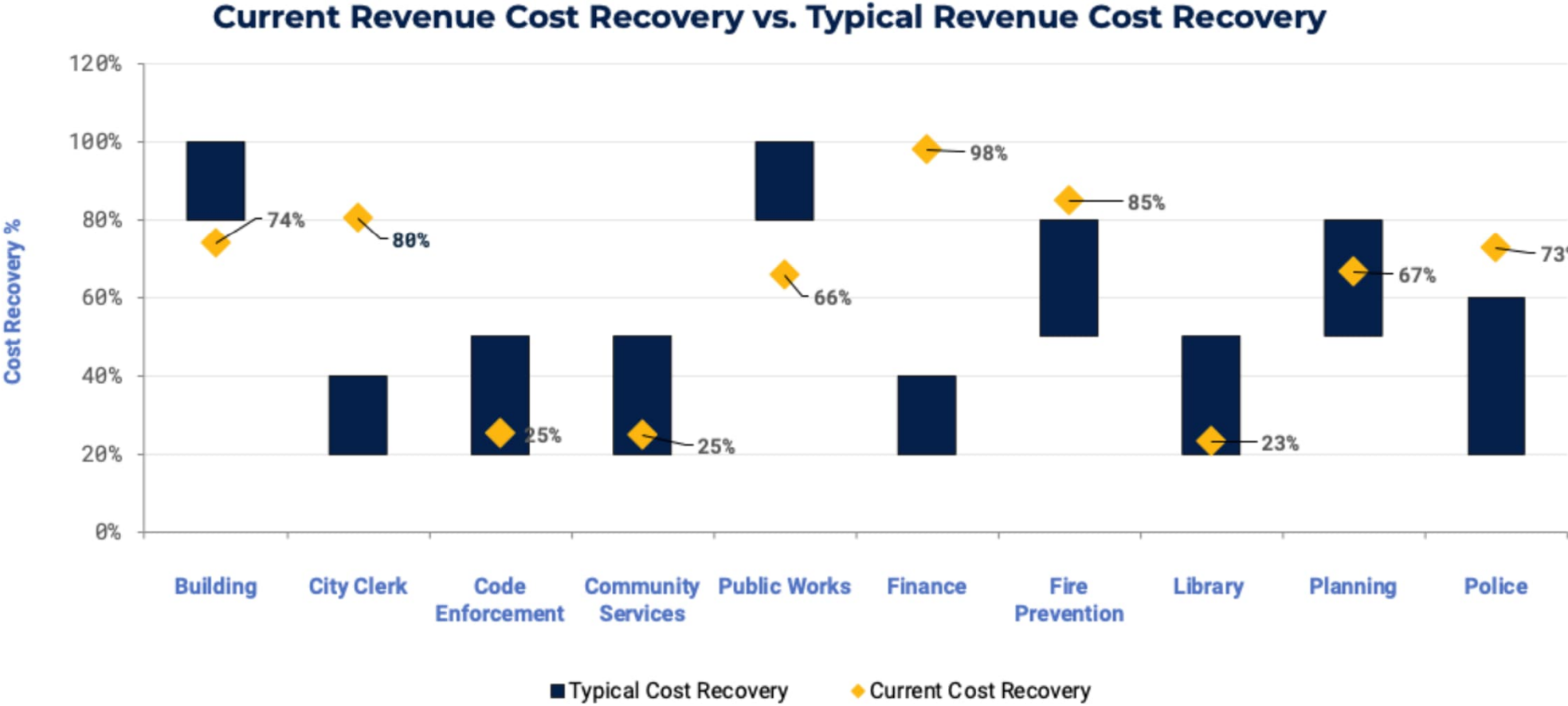


FEE STUDY RESULTS (2)

Service Area	Total Revenue	Total Annual Cost	Difference	Cost Recovery %
Building	\$1,628,163	\$2,198,406	(\$570,243)	74%
City Clerk	\$10,935	\$13,625	(\$2,690)	80%
Code Enforcement	\$1,965	\$7,789	(\$5,824)	25%
Community Services	\$501,329	\$2,009,526	(\$1,508,197)	25%
Public Works	\$764,933	\$1,163,424	(\$398,491)	66%
Finance	\$665,281	\$679,262	(\$13,981)	98%
Fire Prevention	\$241,527	\$284,784	(\$43,256)	85%
Library	\$57,984	\$248,547	(\$190,563)	23%
Planning	\$361,110	\$542,784	(\$181,674)	67%
Police	\$63,594	\$87,494	(\$23,900)	73%
Total	\$4,296,821	\$7,235,640	(\$2,938,819)	59%



COST RECOVERY COMPARISON



NEXT STEPS



Seek input from Council on where / how to set fees (Master Fee schedule attachment).



Adopt an annual fee escalator (CPI or COLA), recommended to ensure annual cost increases keep up with fee increases.



Reevaluate fees again in 5-7 years based on organizational / technological changes.

