

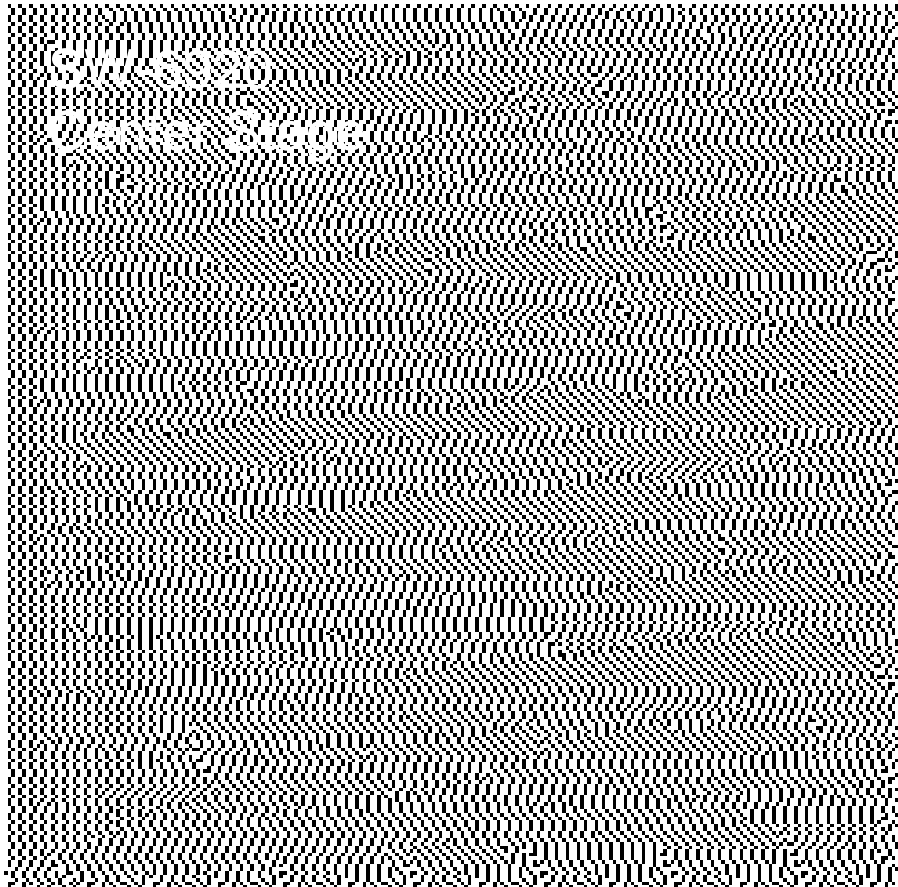
PAINT



P1



P2

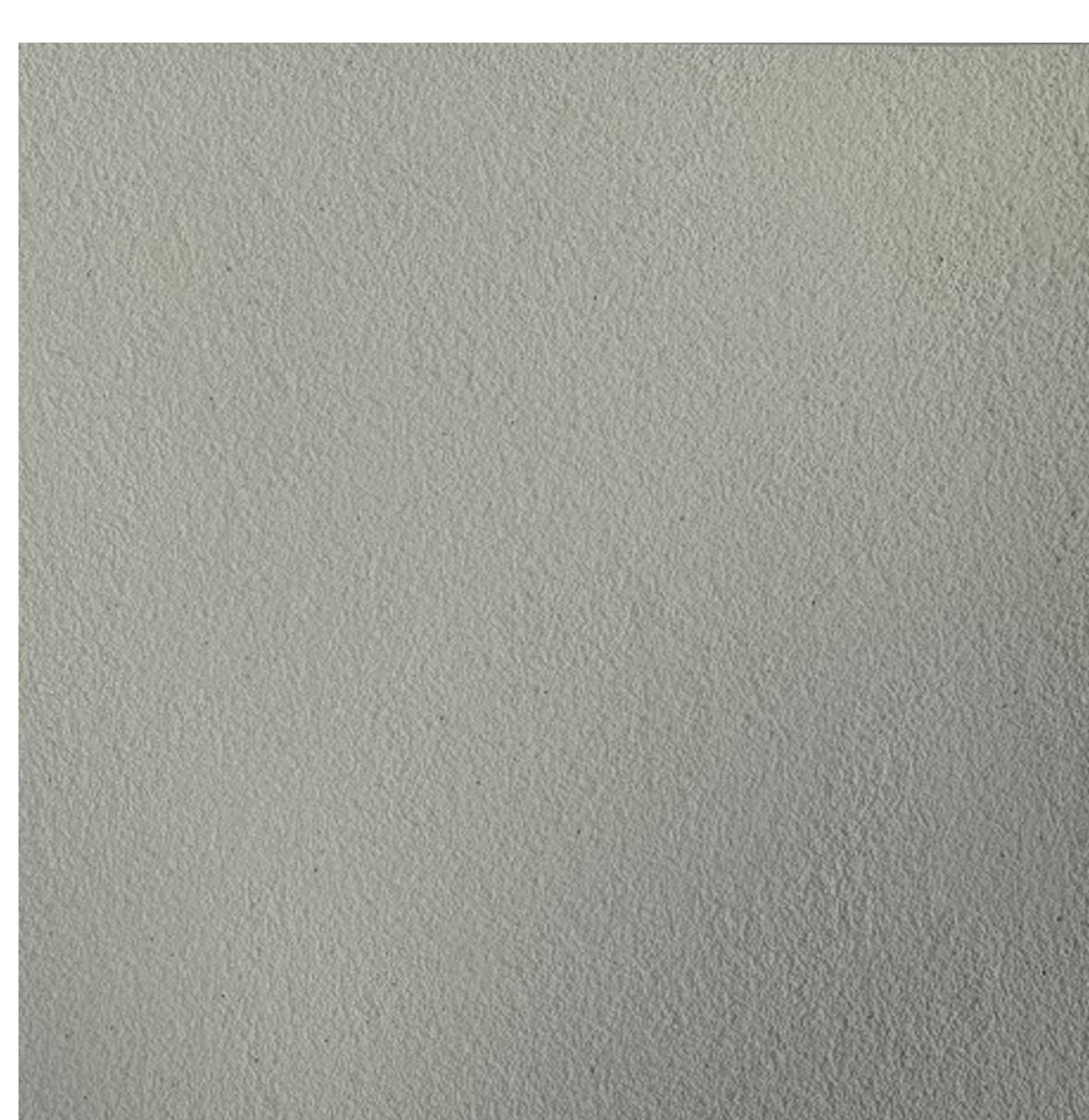


P3

METAL FINISH



STUCCO FINISH



WOOD ACCENT



COURTYARD SCREEN



LINK & LOCK SCREENS & ENCLOSURES

TYPICAL ISOMETRICS

TYPICAL SECTIONS

TECHNICAL SPECIFICATIONS

PHYSICAL DATA

6063 T5 Extruded Aluminum
100% Recyclable
Warranty: Finish 15 year (standard)/20 year* (ultra) (*10 week lead time)
Aluminum: 50 year
Weight (lb/ft²): 0.33 (2"), 1.3 (4"), 1.5 (6"), 1.9 (8")

TESTING

ICC-ES Evaluation Report - Division: 05 00 00 - METALS
• Section: 05 50 00 - Metal Fabrications

LARR - Los Angeles Department of Building Safety (LADBS) accepts ICC-ES reports as proof of compliance

Florida Building Code - Building
Florida Building Code - Residential

WUI (The Wildland-Urban Interface) - California Department of Forestry & Fire Protection Office of the State Fire Marshal Listing No. 8140-2285-0500

FINISHES

Woodgrains, solid colors, naturally aged metals, special order. Custom solid color matching available (additional lead times apply).

LEAD TIME

3-6 business days + shipping (subject to change).

BIM & CAD

RVT & DWG files available, see our website for details.

COMPONENTS

End Caps, Mounting Clips.

ATTACHMENT

Fasten w. #12 screws* @ 6" o.c. using mounting clips. (*Not included)
① See install guide for details.

LONGBOARD ARCHITECTURAL PRODUCTS

info@longboardproducts.com
800 604 0343

LAL_SAE_RS_RA_V11



BOULDER ASSOCIATES

300 SPECTRUM CENTER DR, SUITE 730
IRVINE, CALIFORNIA 92618
949.727.9000

PROJECT 235840.00

SOS 171 S. ANITA DR.

DD

DATE

REVISIONS

DESCRIPTION DATE

SHEET TITLE

COLOR AND MATERIALS

SHEET NUMBER

13