

2375 N.TUSTIN ST. - DETACHED/DUPLEX

ORANGE, CA.

MELIA HOMES
9860 IRVINE CENTER DRIVE
Irvine, CA. 92618
(949) 274-0746
SEPTEMBER 2, 2025



5256 S. MISSION RD. STE 404
BONSALL, CA. 92003
760.724.1198

MANUFACTURERS:
VISTA PAINT
GAF ROOFING
JAMES HARDIE

SCHEME A

STUCCO 1:



BARELY WHITE 0021

①

STUCCO 2:



HARROW GATE 0230

②

STUCCO 3:



CAMEL'S HUMP 0219

③

TRIM:(FASCIA/TRIM/DOOR)



MOUNT OLIVE 0382

④

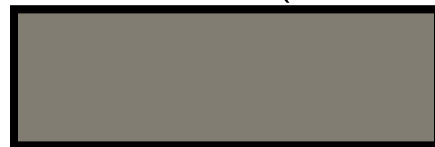
ROOF:(TIMBERLINE HDZ)



COPPER CANYON

⑤

ACCENT:(GARAGE/METAL)



SHARK FIN 0574

⑥

SIDING:



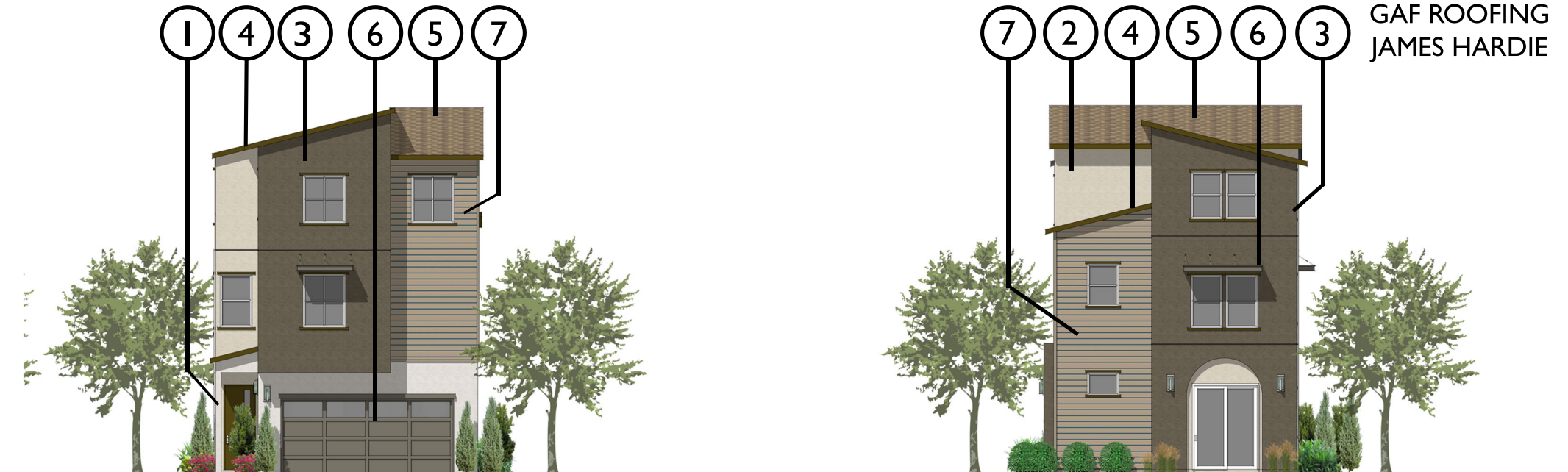
⑦

HARDIE PLANK - NAVAJO BEIGE

WINDOWS

ALL WINDOW FRAMES
SHALL BE WHITE VINYL

IMAGES DEPICT TYPICAL
CONDITIONS FOR COLOR/
MATERIAL TYPES AND LOCATIONS.
REFER TO ELEVATIONS FOR
ADDITIONAL NOTES AND
INFORMATION



PLAN 5B DETACHED - FRONT

PLAN 3A DETACHED - FRONT



PLAN 2 - SIDE ELEVATION

DUPLEX B PLAN 2/5A - PRIVATE YARD

2375 N.TUSTIN ST. - DETACHED/DUPLEX

SCHEME B

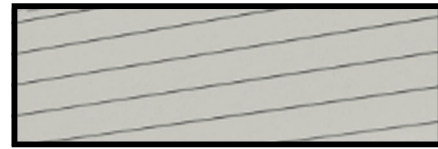
STUCCO 1:



WHITEV000

①

SIDING:



HARDIE PLANK - ARCTIC WHITE

⑧

STUCCO 2:



DOVE WHITE 0018

②

WINDOWS

ALL WINDOW FRAMES SHALL BE WHITE VINYL

⑤ ⑥ ⑧ ⑦ ④ ①

STUCCO 3:



MARSEILLES 0525

③

STUCCO 4:



LONDON ROAD 0527

④

TRIM:(FASCIA/TRIM/DOOR)



ZEN RETREAT 0535

⑤

ROOF:(TIMBERLINE HDZ)



WEATHERED WOOD

⑥

ACCENT:(METAL)



ZEN RETREAT 0535

⑦

ORANGE, CA.

MELIA HOMES
9860 IRVINE CENTER DRIVE
Irvine, CA. 92618
(949) 274-0746
SEPTEMBER 2, 2025

IMAGES DEPICT TYPICAL
CONDITIONS FOR COLOR/
MATERIAL TYPES AND LOCATIONS.
REFER TO ELEVATIONS FOR
ADDITIONAL NOTES AND
INFORMATION



5256 S. MISSION RD. STE 404
BONSALL, CA. 92003
760.724.1198

MANUFACTURERS:

VISTA PAINT
GAF ROOFING
JAMES HARDIE



PLAN 3B - DRIVE AISLE

DUPLEX C - PLAN 4/3C - PASEO



PLAN 4 - SIDE

DUPLEX A - PLAN 1/4 - PASEO