




TECHNICAL MEMORANDUM

To:	Diane Scioli Milan Capital Management, Inc.	Date:	August 13, 2025
From:	Keil D. Maberry, P.E., Principal LLG, Engineers 	LLG Ref:	2.25.4995.1
Subject:	Haul Route Traffic Management Plan (TMP) Tract Map No. 18163 - Orange, California		

2 Executive Circle
Suite 250
Irvine, CA 92614
949.825.6175 T
949.825.5939 F
www.llgengineers.com

Pasadena
Irvine
San Diego

In response to the Condition of Approval for the proposed Tract 18163 Residential Project, this Haul Route TMP has been prepared to address the following requirement:

- *Contractor will submit a traffic management plan including vehicular traffic control plan for review and approval of the City prior to commencement of hauling operations. This will include, but not be limited to, any uncontrolled turning movements, truck turn templates, and flagmen to assist with trucks merging into the traffic stream.*

The Haul Route TMP will be consistent with the latest version of the California Manual on Uniform Traffic Control Devices (CA MUTD) and/or the California Temporary Traffic Control Handbook (CATTCH) (previously known as the California Joint Utility Traffic Control Manual). At a minimum, the Haul Route TMP shall include, but not be limited to, the following:

1. Provisions for temporary traffic control to improve traffic flow on public roadways and ensure the safe access into and out of the site (e.g., warning signs, temporary striping, lights and devices, and flag personnel);
2. At least one direction of travel in each direction on adjacent roadways (Yellowstone Boulevard and East Mabury Avenue) must always be maintained during project construction activities;
3. Identify planned detours should full closures be required;
4. Prohibiting construction-related vehicles from parking on public streets;
5. Obtaining the required permits for truck haul routes from the City of Orange and/or the California Department of Transportation (Caltrans);
6. Maintaining unobstructed emergency access to the Project site and adjacent areas during all phases of construction. Flag personnel shall be trained to assist in emergency response by restricting or controlling the movement of traffic that could interfere with emergency vehicle access.

In addition to the six (6) provisions listed above, the following should also be addressed, subject to concurrence by the City of Orange:

7. Maintain all haul routes clean and free of debris including but not limited to gravel and dirt as a result of Project's operations. The Applicant shall clean adjacent streets, as directed by the City Traffic Engineer (or representative of the City Traffic Engineer), of any material which may have been spilled, tracked, or blown onto adjacent streets or areas.
8. Haul trucks entering or exiting public streets shall at all times yield to public traffic.
9. If hauling operations cause any damage to existing pavement, street, curb, and/or gutter along the haul route, the applicant will be fully responsible for repairs. The repairs shall be completed to the satisfaction of the City Traffic Engineer.
10. All construction-related parking and staging of vehicles will be kept out of the adjacent public roadways and will occur on-site to the extent feasible.

It should be noted that there are two (2) haul route options under consideration, of which both may be utilized during the soil import operation for the proposed Project. Therefore, this Haul Route TMP addresses both options, accordingly.

To address the applicable requirements as noted above in City's haul route condition of approval, **Figure 1** schematically illustrates the recommended Option 3 Haul Route that construction-related truck traffic would utilize during the import of soil from the Project site during site grading. **Figure 2** illustrates the recommended Option 2 Haul Route that construction-related truck traffic would utilize during the import of soil from the Project site during site grading. **Figure 3** illustrates the truck turning movements associated with the Option 3 haul route for the anticipated trucks that will be used for the import of soil at the key intersections along the route in the vicinity of the Project site. **Figure 4** illustrates the truck turning movements associated with the Option 2 haul route for the anticipated trucks that will be used for the import of soil at the adjacent site access along Santiago Canyon Road in the vicinity of the Project site. Based on information provided by Milan Capital, the Project Applicant/Proponent, the anticipated construction work schedule and frequency associated with the construction related traffic to and from the site is as follows:

Construction Activity (Soil Import)

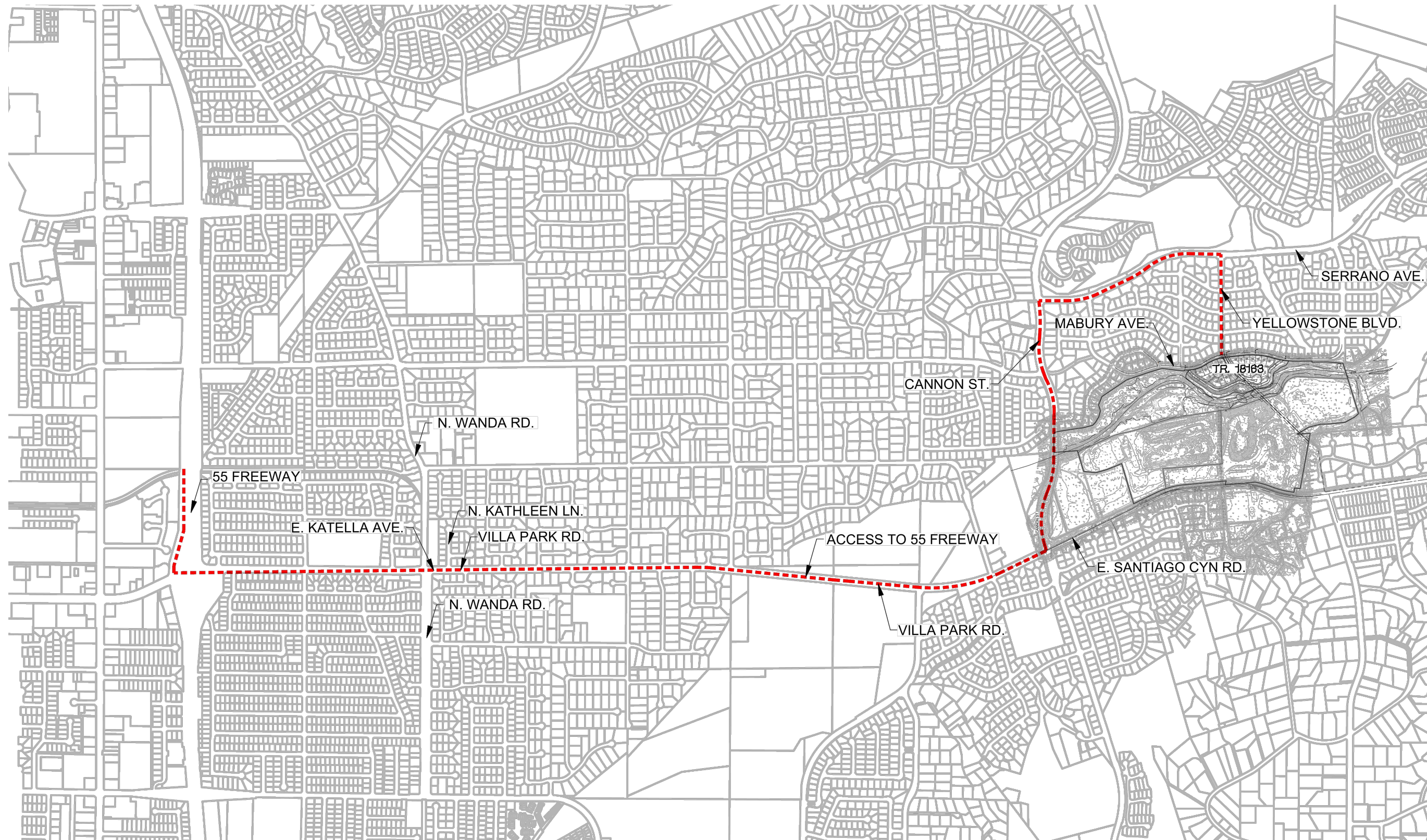
- ❑ The expected number of employees is 12 per day, with parking on-site.
- ❑ Duration: 6 months days (excludes Saturdays and Sundays).
- ❑ Employee hours of operation: Monday through Friday, 7:30 AM to 4:30 PM.
- ❑ Truck hauling hours of operation: Monday through Friday, 8:30 AM to 3:30 PM.
- ❑ Truck capacity: 14 CY per truck.
- ❑ Average number of trucks per day: 240 trucks per day.
- ❑ Truck operation restriction:
 - Maintain a 5-minute headway at all times,
 - No stacking of trucks on any public street in the City,
 - Construction traffic is prohibited on Mabury Avenue.
- ❑ Streets shall be regularly swept as determined by the City and free of dirt and debris

* * * * *

Should you have any questions regarding this memorandum, please contact me at (949) 825-6175.

Attachments





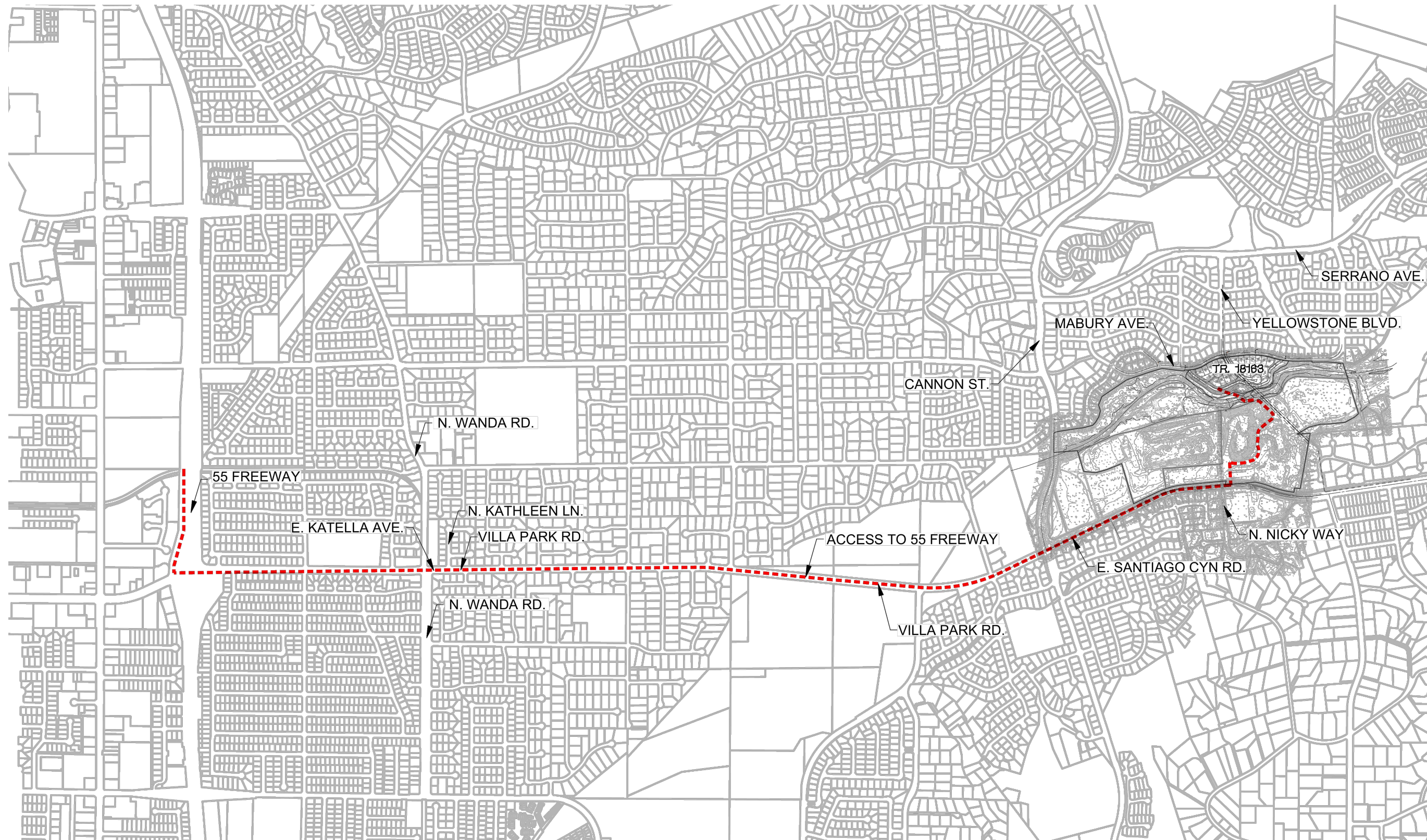
n:\4900\2254995 - tract 18163 tmp, orange\dwg\4995 f-1.dwg LDP 12:05:03 08-13-2025 agular



LEGEND
 - - - - - TR. BOUNDARY
 - - - - - HAUL ROUTE

FIGURE 1

HAUL ROUTE - OPTION 3
 TRACT 18163, ORANGE



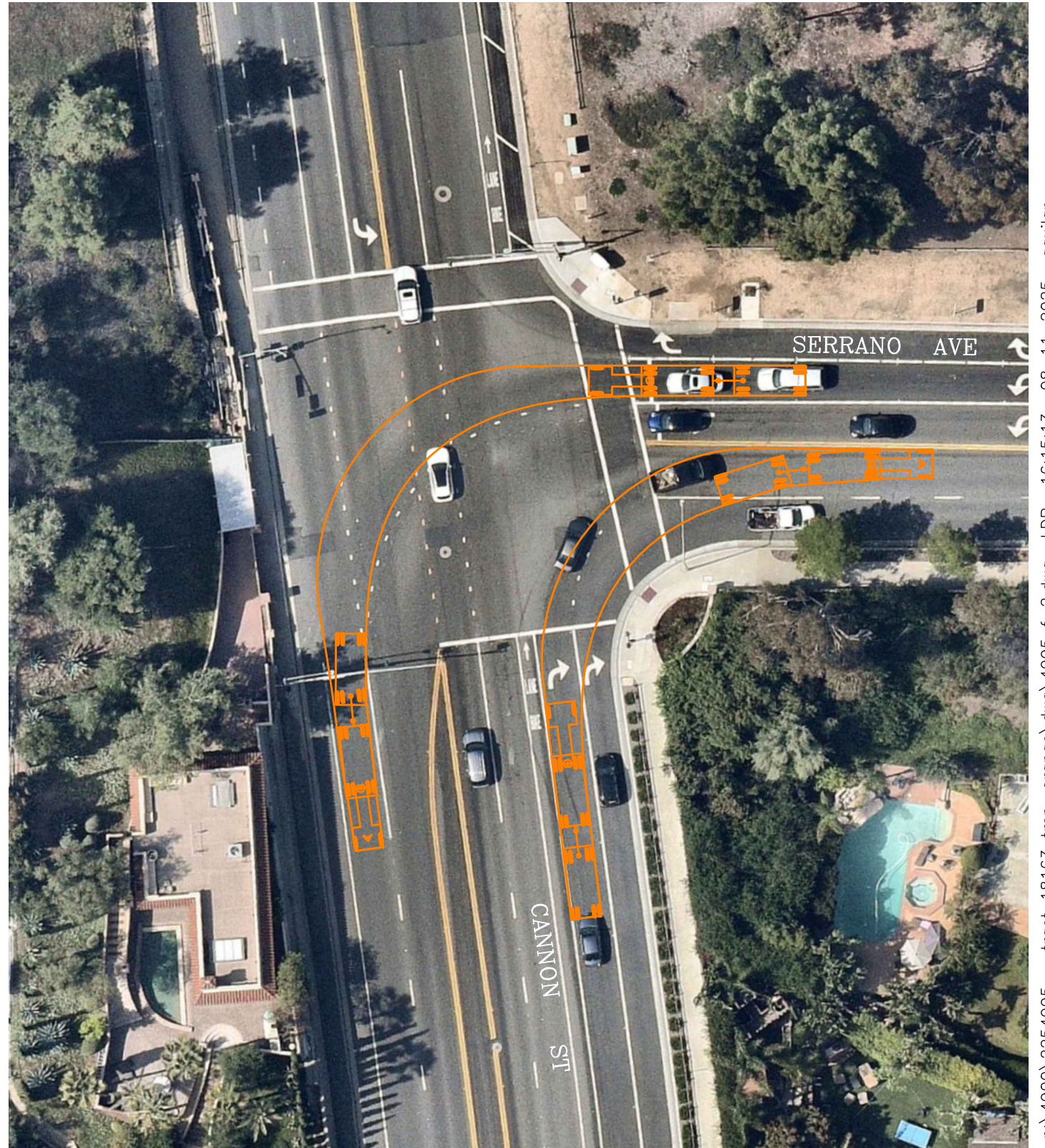
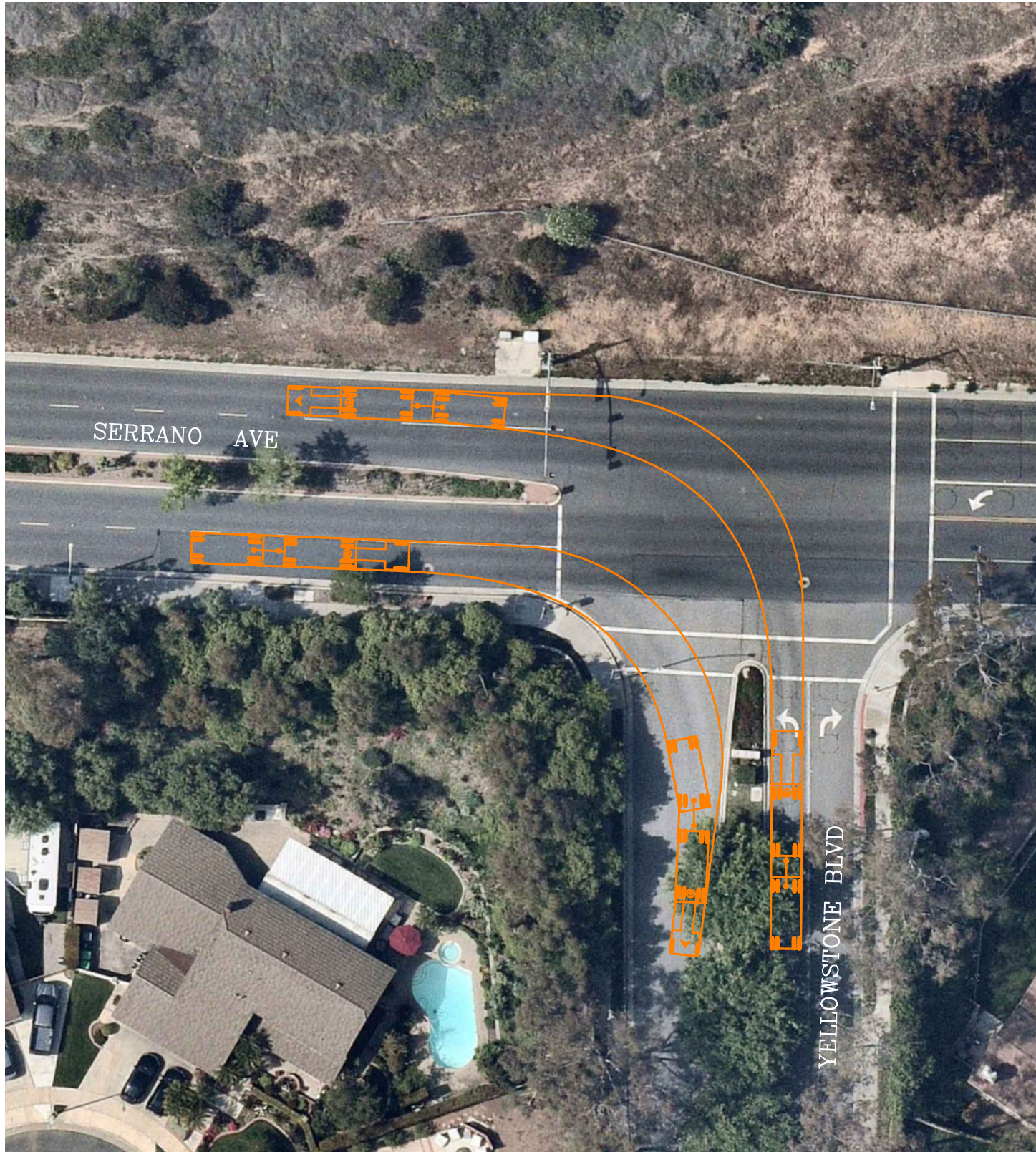
n:\4900\2254995 - tract 18163 tmp, orange\dwg\4995 f-2.dwg LDP 12:03:37 08-13-2025 agular



LEGEND
 - - - - - TR. BOUNDARY
 HAUL ROUTE

FIGURE 2

HAUL ROUTE – OPTION 2
 TRACT 18163, ORANGE



n:\4900\2254995 - tract 18163 tmp, orange\dwg\4995 f-2.dwg LDP 16:15:13 08-11-2025 agular

FIGURE 3

TRUCK TURNING MOVEMENT
TANDEM TRAILER DIRT HAULER – OPTION 3
 TRACT 18163, ORANGE



n:\4900\2254995 - tract 18163 tmp, orange\dwg\4995 f-4.dwg LDP 11:55:39 08-13-2025 agular