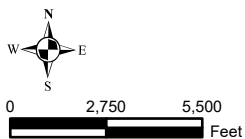
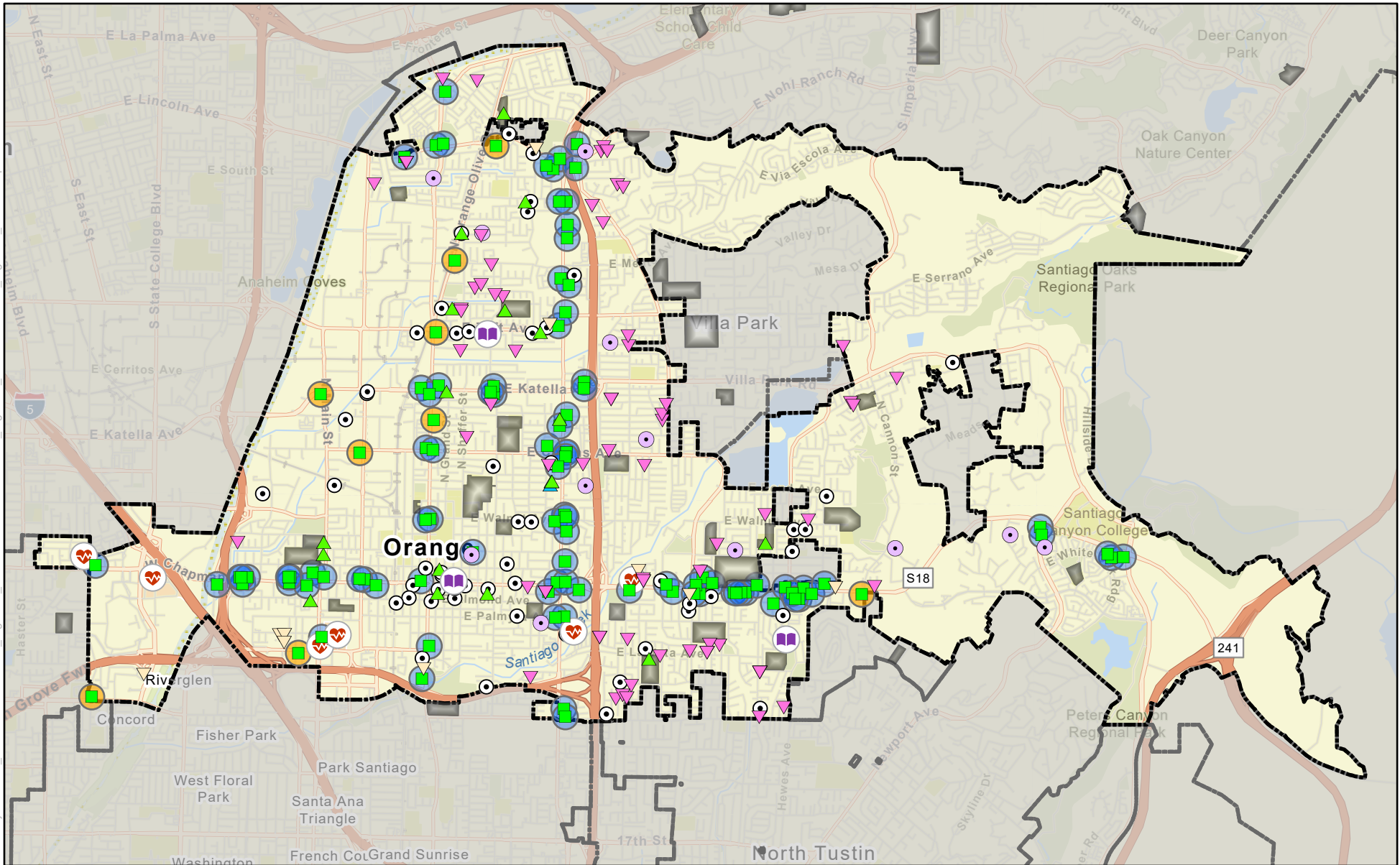


J:\GisProjects\Code Enforcement\Tobacco, Cigarette, Retailers\GIS\APR\Tobacco, Cigarette, Retailers.aprx\Tobacco Retailers - Sensitive



5/7/2025

Source: California Department of Tax and Fee Administration (CDTFA) (03/2025), City of Orange (2025)

Legend

- City Boundary
- Tobacco Retailers
- Within 500-ft of another Tobacco Retailer or Sensitive Receptor
- Not within 500-ft of another Tobacco Retailer or Sensitive Receptor
- OUSD Schools

Care Facilities 2024 - Study

- Adult Day Care Program
- Large Family Day Care
- Pre-School/Day Care
- Residential Care Facility - Elderly (RCFE 6)
- Residential Care Facility - Elderly (RCFE7)

- House Worship
- Library
- Medical Facility

Exhibit 3

CITY OF ORANGE

TOBACCO RETAILERS WITH SENSITIVE RECEPTORS