

5
Façade



www.stamisol.com

STAMISOL®
FT 38I & Color



Poly-Ned

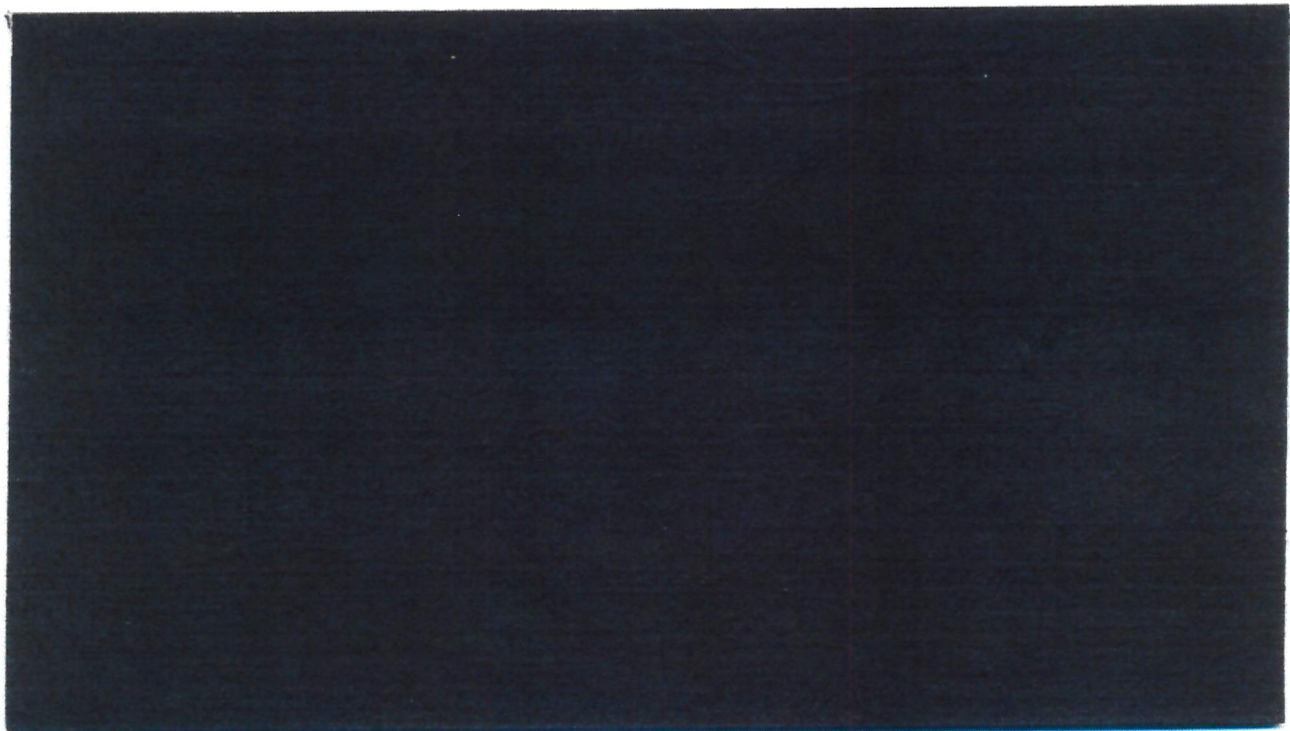
Postbus 177
8330 AD Steenwijk - Holland

Tel: +31 (0) 521 32 02 40
Fax: +31 (0) 521 32 02 30
E-mail: office@polyned.nl
Internet: www.polyned.nl

FERRARI
architecture



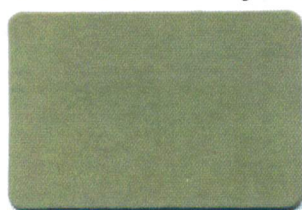
STAMISOL[®] Color – The breathable façade membrane



Eggplant* 50225

The natural ones.

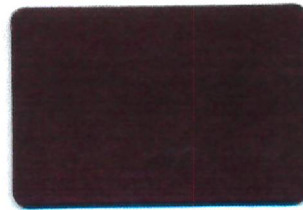
These are colours that have a chameleon effect. They are able to adapt in an outstanding manner and strengthen the character of the selected cladding (wood, metal, glass, fabric etc), whilst simultaneously maintaining their own character.



Olive 50216



Lentil* 50227



Cherry 50219



Eggplant* 50225

The dynamic ones.

These colours are clear and have a strong position, enforcing contrasts and dominating. Their colour intensity provides a luminous reflex in the entire effect.



Daffodil 50215



Honeysuckle 50217



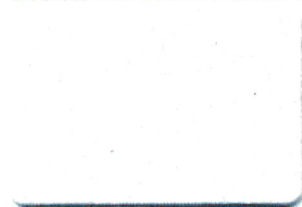
Geranium 50220



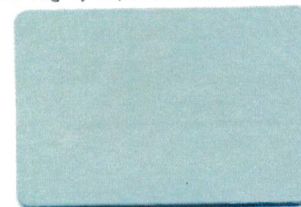
Hydrangea 50218

The subtle ones.

These colours are highly adaptable. Depending on how they combine with the lining material, they can effectively act in a discrete and subtle manner or be highly representative and dominant.



China* 50224



Granite** 50222



Iron* 50226

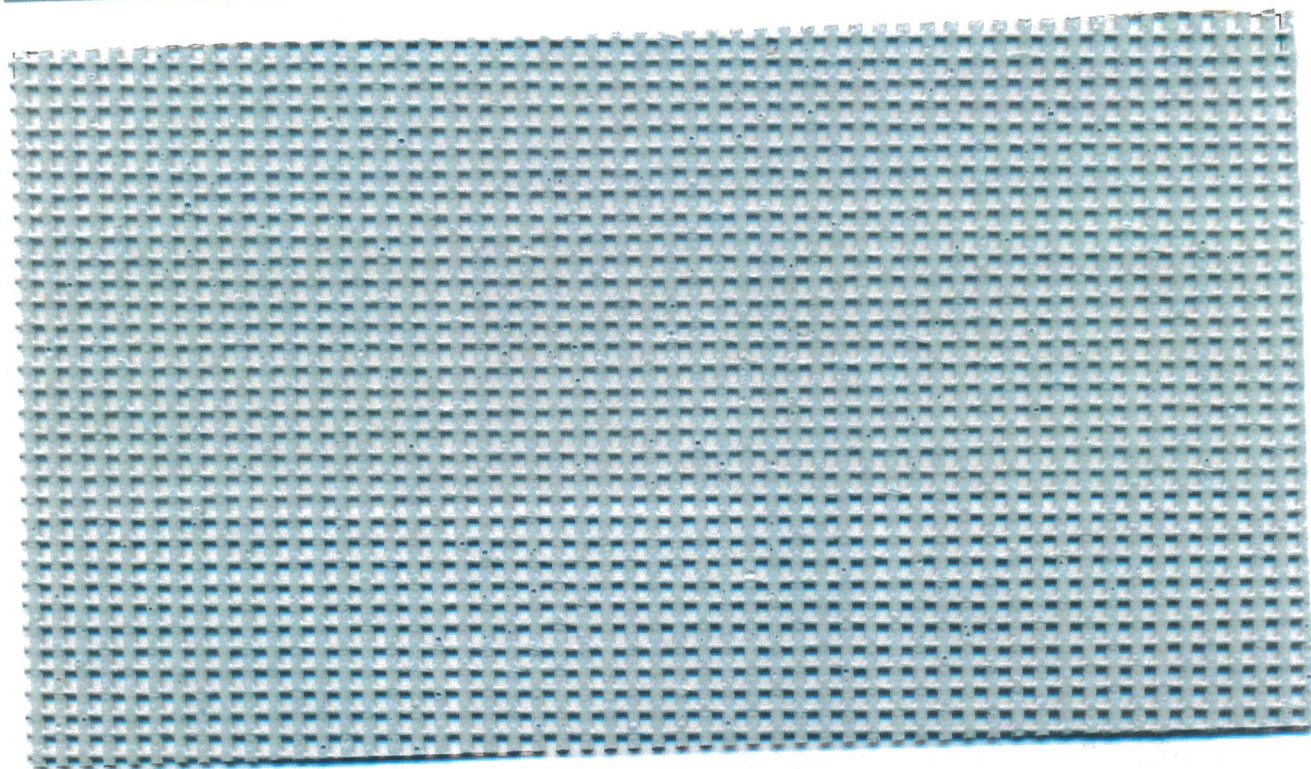


Coal** 50133

* With mother-of-pearl effect

** Also available as STAMISOL[®] COLOR HI-FR with additional flame retardance Euroclass Bs2d0

STAMISOL^{FT} 381 – The façade cladding



Interference-grey

381-3121

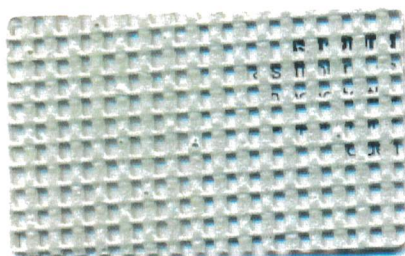


Collection 1 – Substance or no substance

Experience an evanescent world which

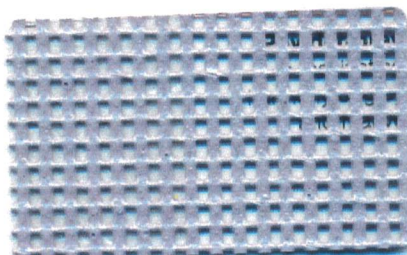
is free of gravity, clearing the way for
ethereality and purity. Whilst light is
reflected, it is also deflected and crea-
tes diffuse surfaces. The substance
expresses itself through contrasts

between matt and glossy and the
colours are cold, almost icy. Grey hues
are metallic or smoke tinted and this
family presents a fascinating pearly
effect within the colour palette.



Ash-blond

381-3109



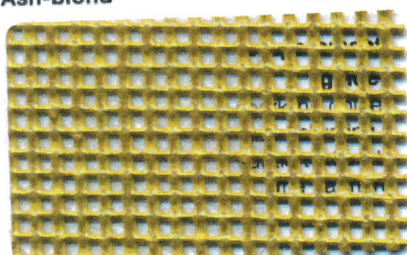
Powder-grey

381-3110



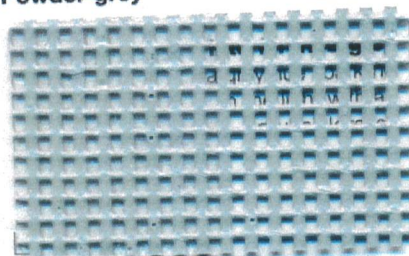
Silver-metallic

381-3128



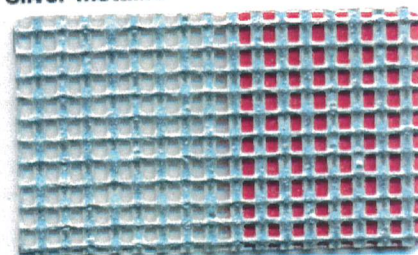
Temperament-golden

381-3124



Interference-grey

381-3121



381-3128 in combination with
STAMISOL[®] COLOR 50220

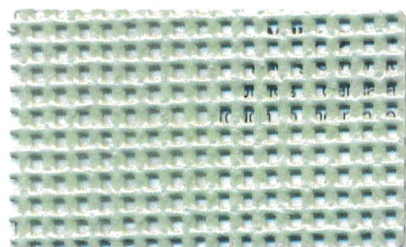


Collection 2 – Appearances can be deceptive

Why not choose an urban or country landscape as a chameleon and merge

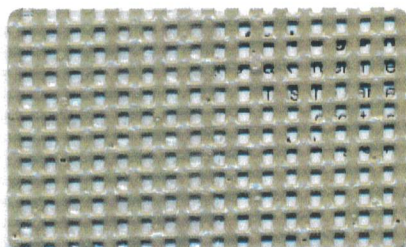
it with your environment? You can make use of both the colours and shapes of the landscape and find a perfect balance between the copy and the original, the arts and the world of plants that lies in them. It is a close encounter of two

colour powers – green and pink-red – that are able to represent respectively the natural universe and the one that has been created by humans.



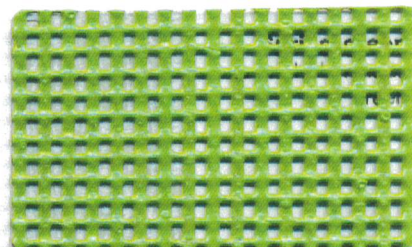
Milky-green

381-3119



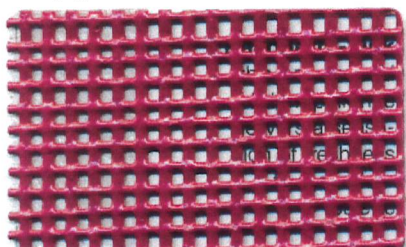
Cactus-green

381-3118



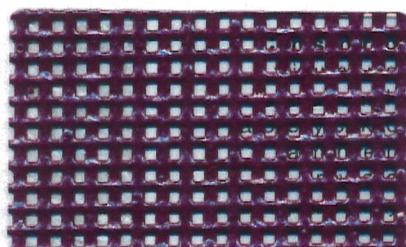
Spring-green

381-3117



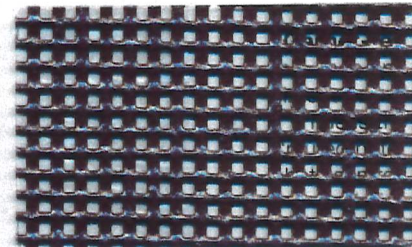
Raspberry-pink

381-3102



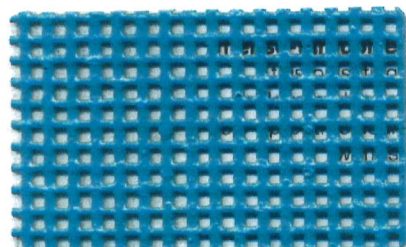
Crimson-red

381-3122



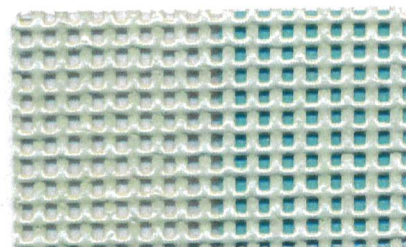
Garnet-red

381-3104



Intense-turquoise

381-3116



381-3119 in combination with
STAMISOL® COLOR 50218

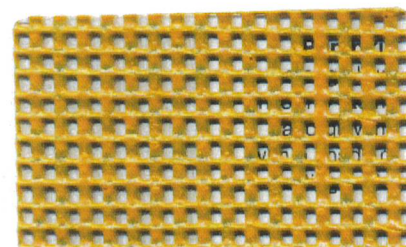


Collection 3 – Panta rhei

Imagine a world that is constantly changing and continually encompassing totally

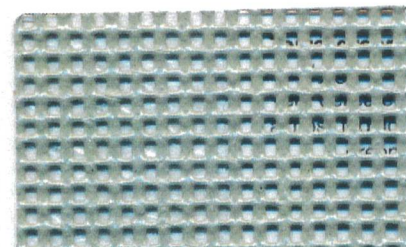
new visions. Architecture shows an evolutionary nature in one of these visions – an amazing metamorphosis of natural and lively materials by means of heat and water. The

colours are natural with patina and an aged look and pictures are evoked from the past in dusty-orange and dusty-green hues.



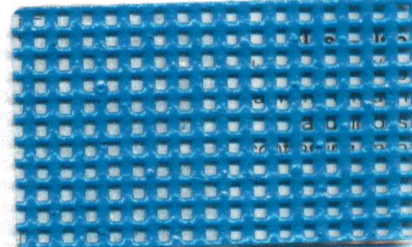
Pumpkin

381-3101



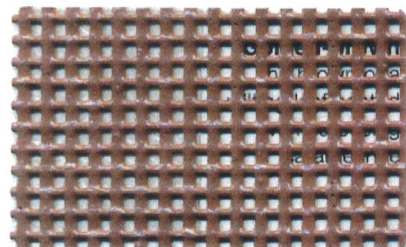
Terra-green

381-3130



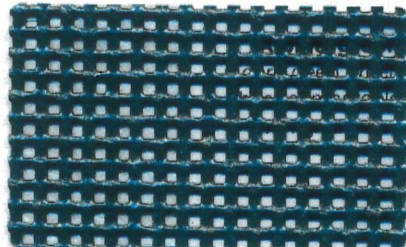
Flash-blue

381-3112



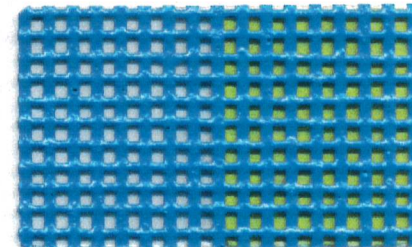
Golden-brown

381-3107

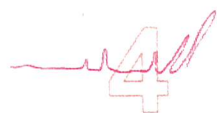


Alpine-green

381-3129



381-3112 in combination with
STAMISOL® COLOR 50217

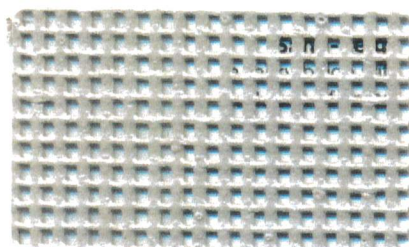


Collection 4 – The second skin

You can now experience an organic world where architecture will almost come alive. In this world,

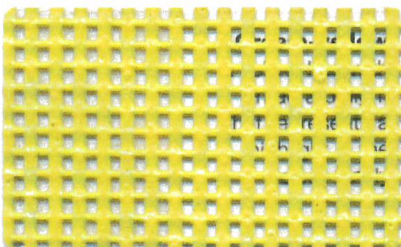
fabric represents a second layer of skin of the architecture. This is an attractive texture; natural and reflective of the cosmopolitan world we live in. The skin comes in a variety of forms – loops and curls, scratches and wrinkles.

The inspiration behind this colour palette source is from the various colours of human skin that range from clear beige to dark brown.



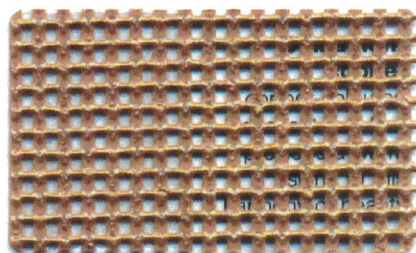
Sand-beige

381-3123



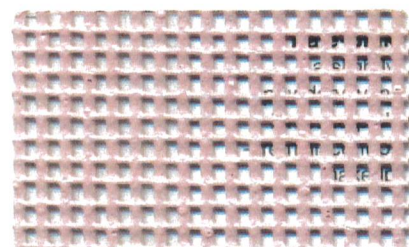
Cream-yellow

381-3126



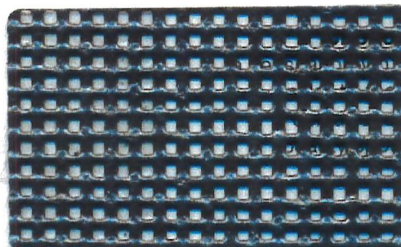
Cinnamon-copper

381-3127



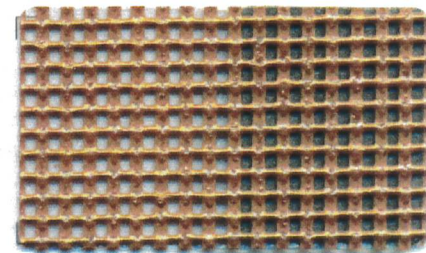
Pale-pink

381-3103



Choco

381-3108



381-3127 in combination with
STAMISOL® COLOR 50226

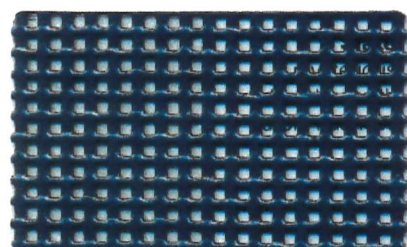


Collection 5 – Conscious disharmony

In this instance, a mysterious parallel universe is created that goes beyond

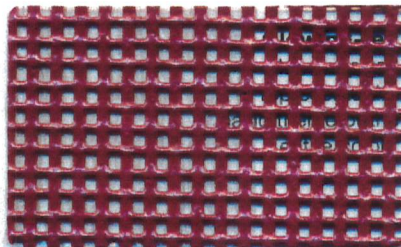
the realms of the ordinary. It rejects the concept of reality and embraces the phenomenal. You will experience an almost confused range of materials darkened with mixed textures and match of light and shades. This colour

family has been designed to unite all dark hues. The contrast between glowing red and black nuances tied together develops a mysterious tension.



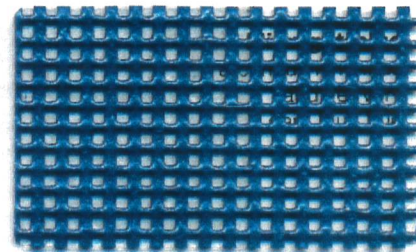
Slate

381-3113



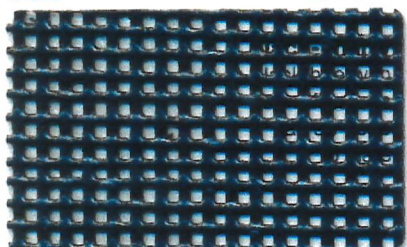
Glowing-red

381-3105



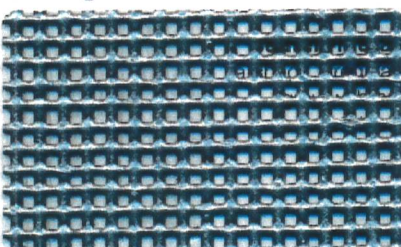
Midnight-blue

381-3111



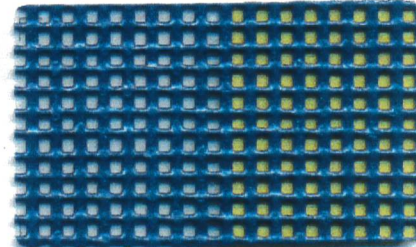
Black-cherry

381-3120



Beaten-metal

381-3125



381-3111 in combination with
STAMISOL® COLOR 50215

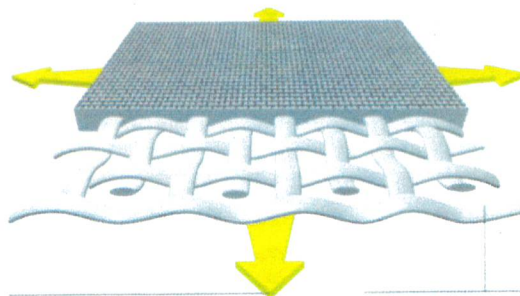
STAMISOL® FT 381

■ Experience maximum safety with the **Précontraint® FERRARI®** process



STAMISOL® FT has been created thanks to over 25 years of experience and expertise accumulated from a range of ambitious projects in the areas of textile architecture and premium sun protection with the brand SOLTIS®. However, without the patented "Précontraint®" technology, this new façade material would not have been possible: It is made, using a special production process, where the fabrics are maintained under tension throughout the whole manufacturing cycle.

This gives very considerable tear resistance, dimensional stability and robustness for a long-term durability. The textile keeps its shape, both during installation and when in use. Furthermore, special yarns with UV-protection provide more safety and longevity.



Two way tensioning keeps yarns completely straight

Weave of high-tenacity polyester yarns with UV-protection

■ Delivering long term durability with outstanding tear resistance

The best proof of this point comes via the laboratory analysis of a fabric which was installed at a multi-storey car park in Avignon, France more than 12 years ago. The analysis demonstrated that even today the tear resistance of the warp thread was 90 % of the original value and the resistance of the weft thread was 80 % of the original value. In addition, the flame retardancy remained unchanged at M2.



The first textile façade for a multi-storey car park in Avignon, France (installed in 1994)

STAMISOL® Color

■ A façade membrane delivering climate protection

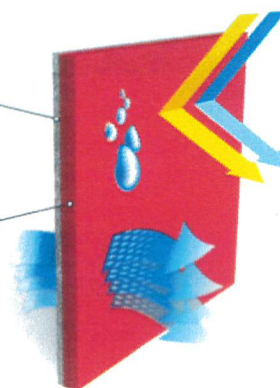
When using the STAMISOL® COLOR façade membrane and an adequate well dimensioned insulation, an excellent additional climatic protection can be created. Furthermore, STAMISOL® COLOR provides excellent protection against rain, humidity and wind, as well as increasing the lifetime and effectiveness of thermal insulation over long periods. And due to its outstanding breathability, any potential humidity within buildings can be driven out very quickly, ensuring the buildings remain in good condition and also guaranteeing an excellent natural climatic comfort.

Polyester/glass fibre nonwoven

Polyester/glass fibre nonwoven increases structural strength.

Polyacrylate

Three layers of polyacrylic material guarantee UV resistance, durability and rain proofing.



STAMISOL® FT 381 & Color

Textile for façades, new buildings and renovations

Administrative buildings, commercial constructions and shopping centres, industrial buildings, sport halls and car parks

Façade breather membrane

As a seal screen behind the textile façade and other façade claddings

Textile façade – A façade for a new style of architecture

STAMISOL® FT, FERRARI® has revolutionised façade architecture through our textile façade. This has been achieved with a new, unique material, characterised by its special textile materiality and outstanding options, encompassing:

- a collection of 27 colours, which was created by top architects and colour designers
- on the second level, STAMISOL® COLOR façade membrane can be added as an additional creative dimension
- an arrangement that is virtually independent of the building structure, which also provides 3-dimensionality through the flexibility of the material
- exceptional transparency from the interior to the exterior (NB cladding of window openings possible)
- additional digital printing option available providing you with totally free design

Thanks to its outstanding technical performance, architects and investors can – as is the case with FERRARI® – be certain of maximum safety and reliability for their projects and experience high longevity through a 10 year guarantee. In addition, they will benefit from the excellent energy balance combined with ideal climate comfort, heat and sun protection and low maintenance costs.



Metalltechnik Annaberg administration and production building, Annaberg, Germany



Remarkable visibility to the outside: Office building Silver Spur, Los Angeles, USA

A truly complete system

Thanks to the first fabric for façades in the world, STAMISOL® FT, FERRARI® has not only created a new

and fascinating façade material but also a complete, sophisticated system based on ventilation.

STAMISOL® FT 381

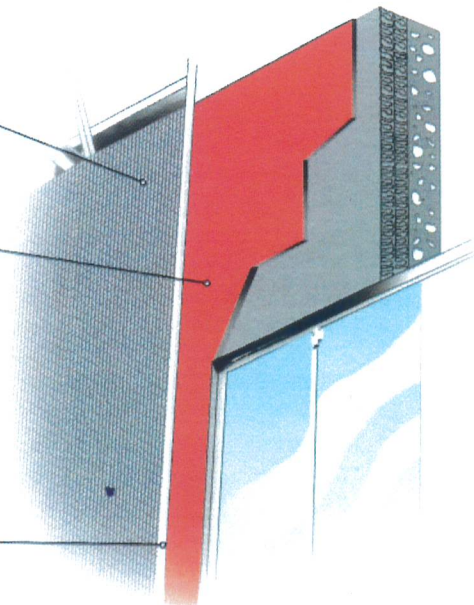
The new façade material with its fascinating transparency, a collection comprising 27 popular colours or freely created designs via digital printing.

STAMISOL® COLOR

This high-quality membrane is glued onto the whole sub-structure surface. This means that it provides exceptional imperviousness to both wind and rain, breathes and ensures long-term UV resistance. STAMISOL® COLOR is an innovative membrane programme that has been designed for new architectural concepts and ideas. In essence, it can either be implemented alone or in combination with other conventional façade materials or the STAMISOL® FT textile façade.

Understructure

For various requirements, there are specially designed understructures available for STAMISOL® FT. This means a great variety in terms of creating the façade screen



STAMISOL® FT 381

STAMISOL® Color

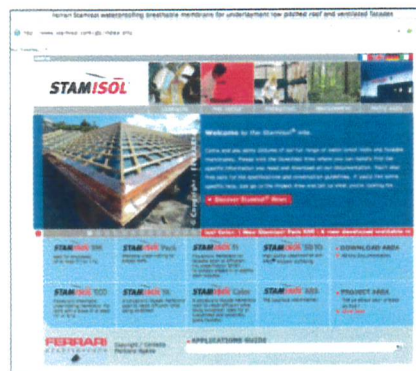
Technical specifications	STAMISOL® FT 381	STAMISOL® COLOR	STAMISOL® COLOR HI-FR*	Standards
Finish front side	metallic or mother-of-pearl	mother-of-pearl or matt	matt	
Finish back side	matt	-	-	
Yarn	1100 Dtex PET HT	PET/Glass/PET	PET/Glass/PET	
Weight	600 g/m ²	420 g/m ²	780 g/m ²	EN ISO 12127
Thickness	1,1 mm	0,75 mm	0,8 mm	EN ISO 5084
Width	267 cm	250 cm	250 cm	(-1 mm/+1 mm)
Tensile strength (warp/weft)	330/330 daN/ 5 cm	300 N/ 5 cm	300 N/ 5 cm	EN ISO 1421
Tear resistance (warp/weft)	65/65 daN	60 N	45 N	EN 1875-3/DIN 53356
Water penetration resistance	-	> 600 mm	> 600 mm	EN ISO 20811
Air layer thickness equivalent SD	-	ca. 0,05 m	ca. 0,12 m	EN ISO 12572-C
Resistance to vapour diffusion 1/KD	-	ca. 0,069 m ² /hPa/mg	ca. 0,167 m ² /hPa/mg	EN ISO 12572-C
Permeability to vapour	-	ca. 475 g/m ² /d	ca. 300 g/m ² /d	EN ISO 12572-C
Adhesion	9 daN/ 5 cm	-	-	EN ISO 2411
Openness factor	28 %	-	-	
Pressure loss	(DE) P= 3.500 Q ² (DE) P in Pa Q in m ³ /s	-	-	ANSI/AMCA 210/85
Flame retardancy	M1/NFP 92-507 • B1/DIN 4102-1 • BS 7837 • VKF 5.3	M2/NFP 92-507 • B2/DIN 4102-1 • VKF 5.3	VKF 5.3	
Euroclass	Bs2d0/EN 13501-1	E/EN 13501-1	Bs2d0/EN 13501-1	
The membrane installed can withstand intermittent extreme temperatures	-30° C/+70° C	-40° C/+80° C	-40° C/+80° C	
Guarantee	10 years after approval of the project			
Quality management system	✓	✓	✓	ISO 9001
Environmental management system	✓	✓	✓	ISO 14001

The data in the above specifications are average values, accurate to +/-5%.

The purchaser of our products is responsible for their application or their transformation relative to any rights of third parties that may exist. He is also responsible for their implementation and installation in conformity with the norms, working practices and safety rules of the destination country. For the contractual guarantee, please consult our guarantee text. Values shown in the present document are given as a guide to enable our clients to use our products in good conditions. Our products are liable to change due to technical advances and we reserve the right to modify specifications at any time. Purchasers of our products have the responsibility of verifying the validity of the above data.

www.stamisol.com

Downloads, technical data, references, photos, description of tenders, and much more. All in real-time.



Sustainable development

FERRARI® development is based on strict adherence to good safety and environmental practices, that include an understanding of Life Cycle Analysis (LCA), selection of the best materials, and eco-design. The company obtained its first ISO 14001 certification in 2003.

100% recyclable

FERRARI® developed the TXYLOOP® technology specifically for the recycling of composite PVC membranes and textiles. Through the management of its end-of-life products FERRARI® is committed to sustainable development.

www.txyloop.com

Specification service

The FERRARI® specification service is available to inform you, advise you and suggest innovative solutions for your specific requirements.

To detail your project, fill in a form under:
www.stamisol.com

FERRARI

EUROPE

FERRARI SA
La Tour du Pin - FRANCE
Tel: +33 (0)4 74 97 41 33

STAMOID AG
Eglisau - SWITZERLAND
Tel: +41 (0)44 868 26 26

EAST EUROPE

FERRARI RUSSIA
Moscow - RUSSIA
Tel: +7 495 933 65 72

NORTH AMERICA

FERRARI TEXTILES CORP.
Florida - USA
Tel: +1 954 942 3600

SOUTH AMERICA

FERRARI LATINOAMERICA S.A.
Santiago - CHILE
Sao Paulo - BRAZIL

MIDDLE EAST

FERRARI DUBAI
Dubai - U.A.E.
Tel: +971 502 781 350

ASIA - PACIFIC

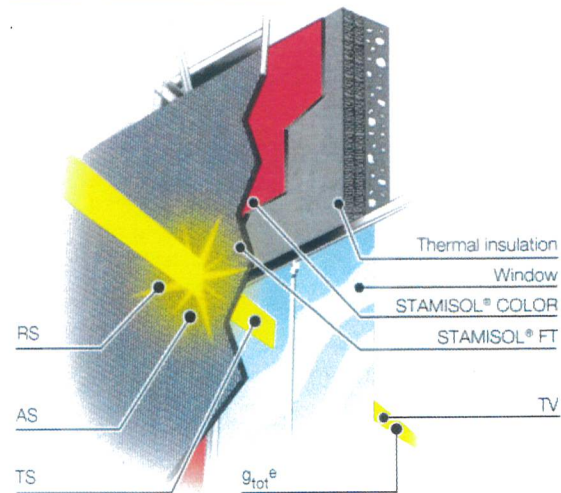
FERRARI HONG-KONG LTD
HONG-KONG
Tel: +852 3622 1340

CHINA

FERRARI CHINA
Shanghai
Tel: +86 216 281 4886

Solar and light properties (according to EN 14501)

	Ref.	RS	TS	AS	g_{tot}^e	TV
	50216	21	0	79	-	0
	50227	16	0	84	-	0
	50219	7	0	93	-	0
	50225	8	0	92	-	0
	50215	59	0	41	-	0
	50217	47	0	53	-	0
	50220	57	0	43	-	0
	50218	47	0	53	-	0
	50224	72	0	28	-	0
	50222	41	0	59	-	0
	50226	19	0	81	-	0
	50133	5	0	95	-	0
	381-3101	27	30	43	0,22	28
	381-3102	30	31	39	0,22	30
	381-3103	39	32	29	0,23	32
	381-3104	10	28	62	0,21	24
	381-3105	19	29	52	0,22	29
	381-3107	19	31	50	0,23	30
	381-3108	10	27	63	0,21	27
	381-3109	36	29	35	0,21	29
	381-3110	33	30	37	0,22	30
	381-3111	21	30	49	0,22	29
	381-3112	24	33	43	0,24	33
	381-3113	8	23	69	0,19	23
	381-3116	23	33	44	0,24	32
	381-3117	25	26	49	0,19	25
	381-3118	33	33	34	0,23	31
	381-3119	39	31	30	0,22	30
	381-3120	6	28	66	0,22	28
	381-3121	31	28	41	0,20	28
	381-3122	12	32	56	0,24	31
	381-3123	34	28	38	0,20	28
	381-3124	28	27	45	0,20	27
	381-3125	20	28	52	0,21	28
	381-3126	43	28	29	0,20	27
	381-3127	26	34	40	0,24	34
	381-3128	38	29	33	0,21	29
	381-3129	8	27	65	0,21	27
	381-3130	27	29	44	0,21	29



TS: solar transmission % TV: visual light transmission factor %
 RS: solar reflection % g_{tot}^e : ext. g-value
 AS: solar absorption %
 TS + RS + AS = 100% of incident energy

Features **STAMISOL'FT 38I**



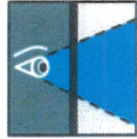
Longevity



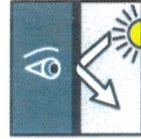
Creative freedom



Individual printing possibilities



Visibility towards the outside



Visual comfort



UV-resistant



Flame retardant



Cost effective



Easy maintenance



Anti-fungicide finishing



10 year guarantee



100% recyclable textile

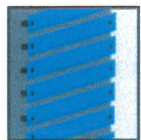


Safety textile

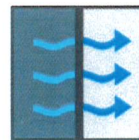
Features **STAMISOL'Color**



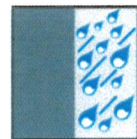
Longevity



For open-work façades



Open to diffusion



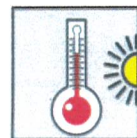
Rain resistant



UV-resistant



Flame retardant



Climate comfort



Cost effective



10 year guarantee



Safety textile

