

©2017 CALIPER

# City of Orange Introduction to Redistricting

Oct 13, 2021

Dr. Justin Levitt, Vice-President, National Demographics

# Redistricting – Why Now?

- ❑ Orange moved to districts in 2019
- ❑ Orange 2020 election used districts for first time
- ❑ Census data is only updated every ten years
- ❑ Delays in receiving the Census data have delayed states, counties, cities, and other jurisdictions throughout California and the US

# Redistricting Process

---

Step	Description
Kickoff Workshop 8/25/2021	Held prior to release of draft maps. Education and to solicit input on the communities in the Districts.
Census Data Release August 12	Census Bureau released official 2020 Census population data in legacy format.
California Data Release September 20	California Statewide Database releases California's official 'prisoner-adjusted' 2020 redistricting data, then a mandated three-week waiting period before maps are released.
Pre-Map Hearings October 13, 2021	Public Hearing to educate and solicit input on the communities in the Districts and take direction on potential changes to the map
Draft Map Hearings December 14, 2021 February 8, 2022	Two Public Hearings to discuss and revise the draft maps and to discuss the election sequence.
Map Adoption By 4/17	Final map must be posted at least 7 days prior to adoption. Map adopted via ordinance or resolution.

# Redistricting Rules and Goals

## 1. Federal Laws

Equal Population  
Federal Voting Rights Act  
No Racial Gerrymandering



## 2. California Criteria for Cities

1. Geographically contiguous
2. Undivided neighborhoods and "communities of interest"  
(Socio-economic geographic areas that should be kept together)
3. Easily identifiable boundaries
4. Compact  
(Do not bypass one group of people to get to a more distant group of people)

Prohibited: "Shall not favor or discriminate against a political party."

## 3. Other Traditional Redistricting Principles

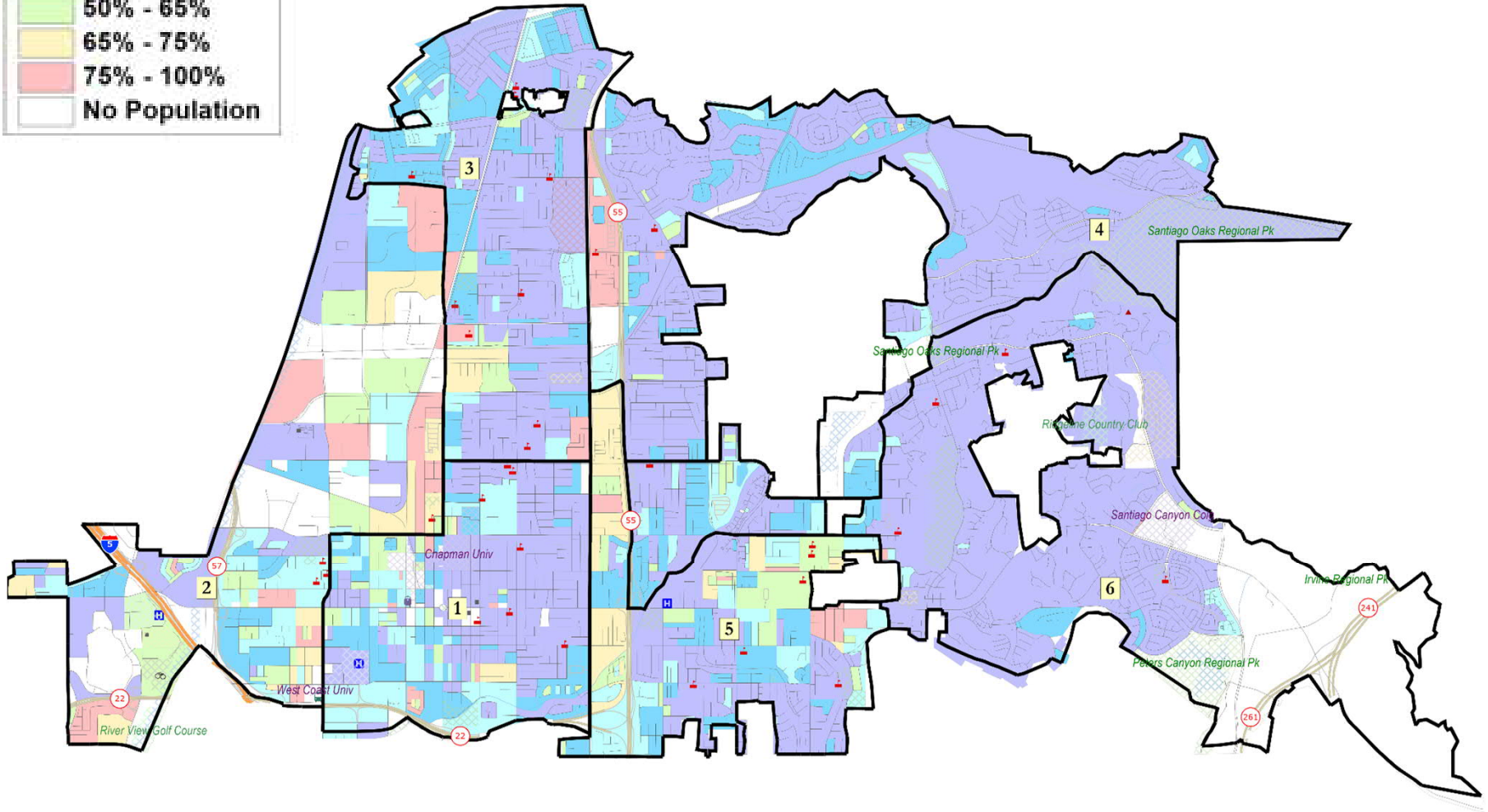
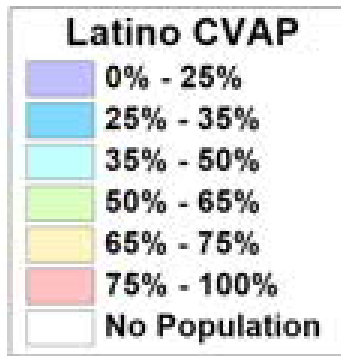
Minimize voters shifted to different election years  
Respect voters' choices / continuity in office  
Future population growth  
Preserving the core of existing districts

# Demographic Summary of Existing Districts

District		1	2	3	4	5	6	Total
2020	2020 Est. Total Pop	25,714	24,163	23,096	22,305	22,829	22,083	140,190
	Deviation from ideal	2,349	798	-269	-1,060	-536	-1,282	3,631
	% Deviation	10.05%	3.42%	-1.15%	-4.54%	-2.29%	-5.49%	15.54%
2020 Total Pop	% Hisp	36%	57%	38%	29%	59%	27%	41%
	% NH White	47%	23%	42%	47%	28%	51%	40%
	% NH Black	2%	3%	2%	1%	2%	1%	2%
	% Asian-American	11%	15%	15%	21%	9%	18%	15%
Citizen Voting Age Pop	Total	19,486	15,372	15,703	14,943	12,808	16,940	95,252
	% Hisp	27%	44%	24%	19%	40%	18%	28%
	% NH White	61%	36%	57%	58%	50%	67%	55%
	% NH Black	1%	4%	2%	2%	1%	1%	2%
	% Asian/Pac.Isl.	10%	16%	16%	21%	8%	14%	14%

Estimates using official state-adjusted 2020 demographic data  
Each of the six districts must contain about 23,365 people.

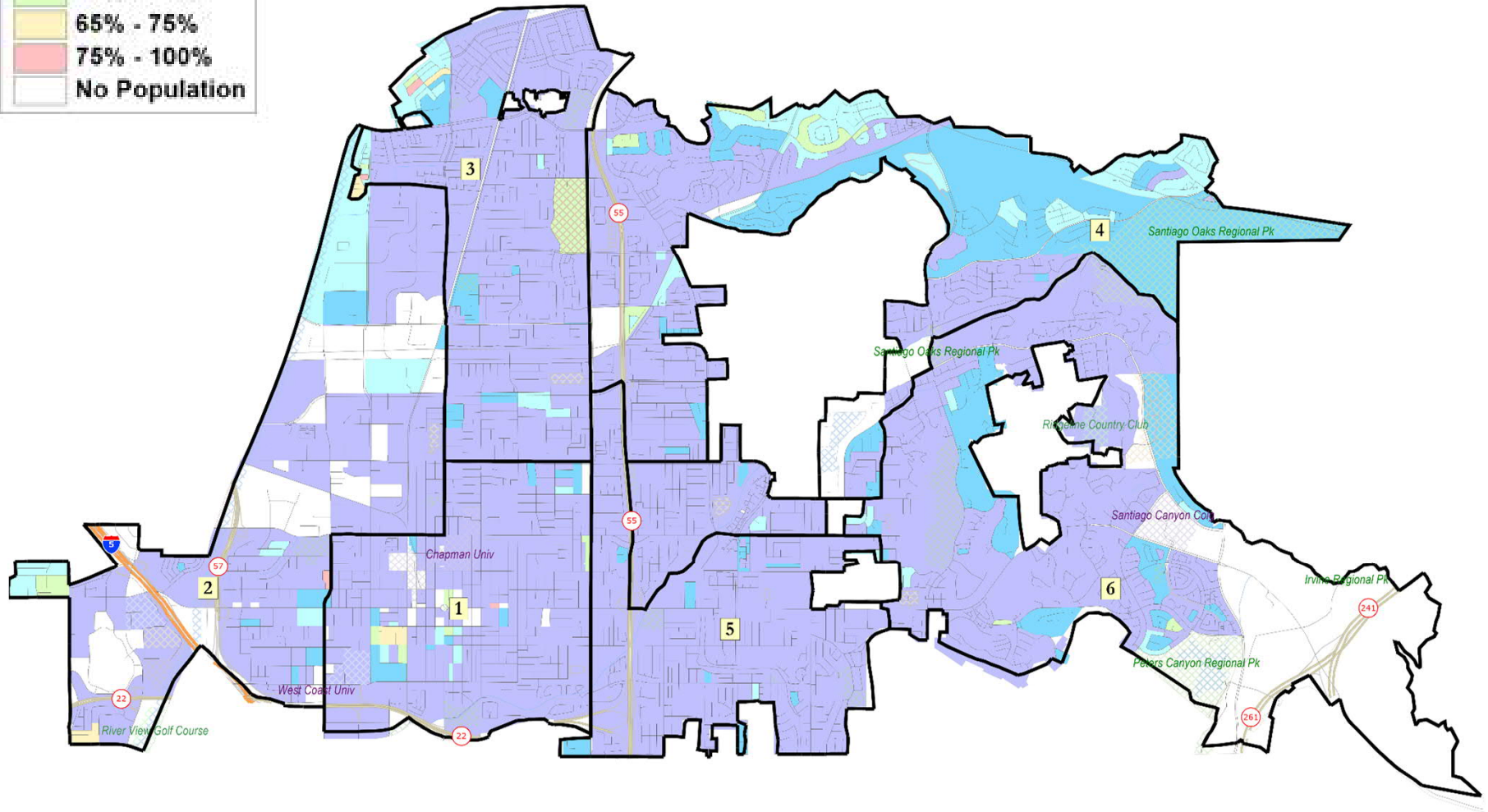
# Latino CVAP



Latino neighborhoods are found in the western end of the city, in the El Modena area and along the 55



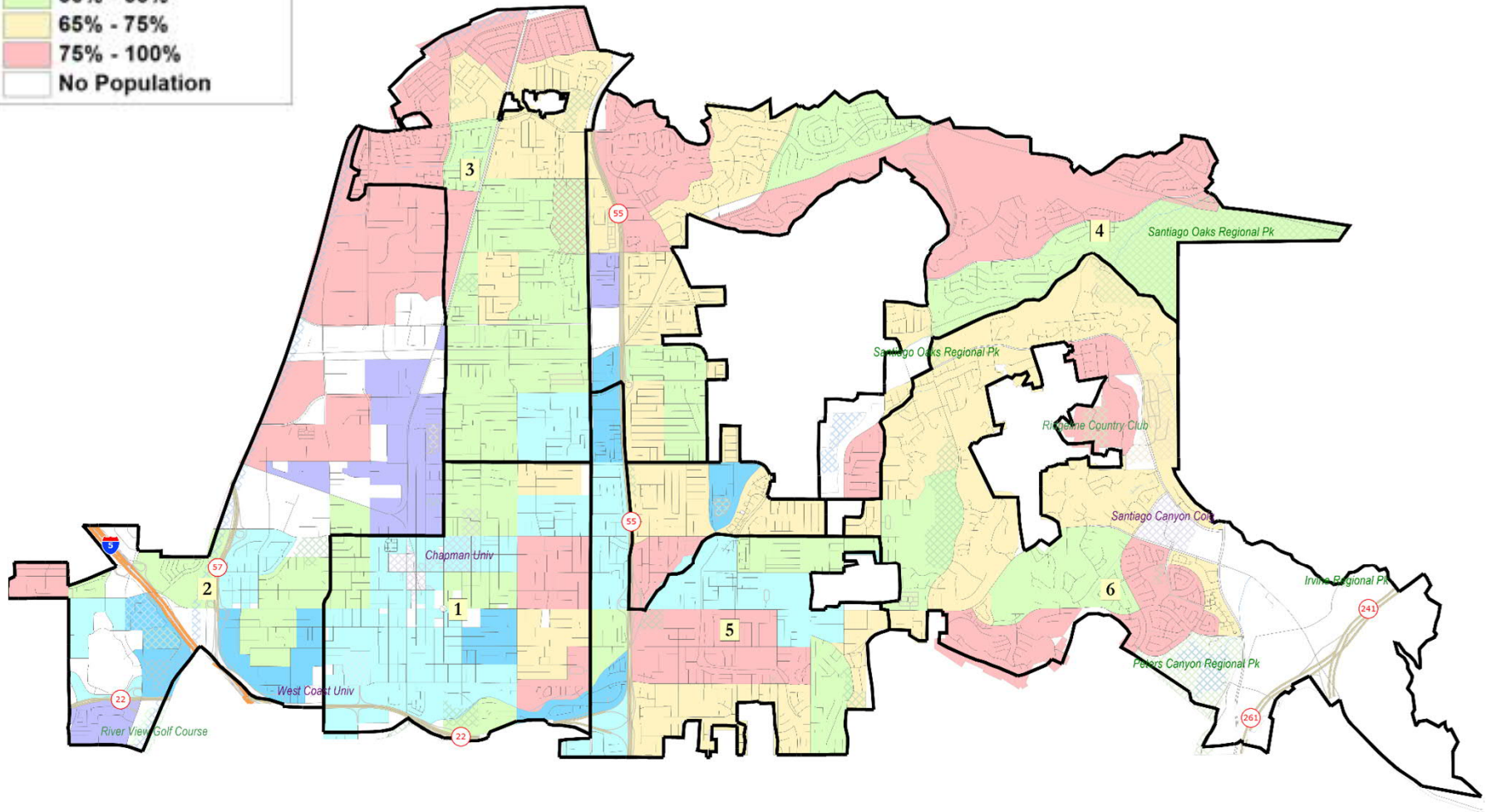
# Asian-American CVAP



Asian-American neighborhoods are found in the north and western parts of Orange

**Income over \$75k**

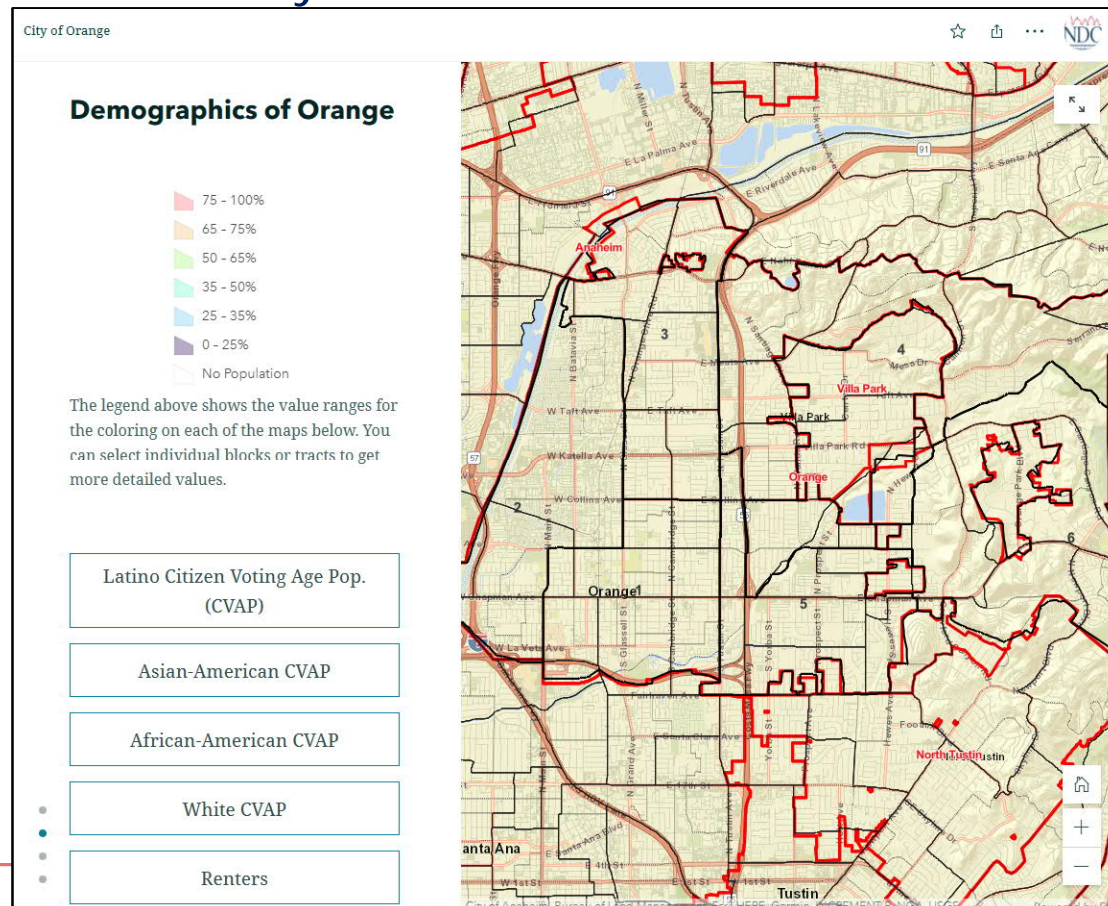
0% - 25%
25% - 35%
35% - 50%
50% - 65%
65% - 75%
75% - 100%
No Population





# Story Map

- Easy to use “story” of demographic and other data
- ▣ Similar to PowerPoint, but interactive
- ▣ Used to identify “communities of interest”



# Defining Neighborhoods

---

1<sup>st</sup> Question: What is your neighborhood?

2<sup>nd</sup> Question: What are its geographic boundaries?

Examples of physical features defining a neighborhood boundary:

- Natural neighborhood dividing lines, such as highway or major roads, rivers, canals and/or hills
- Areas around parks or schools
- Other neighborhood landmarks

In the absence of public testimony, planning records and other similar documents may provide definition.



# Beyond Neighborhoods: Defining Communities of Interest

---

## 1<sup>st</sup> Question: What defines your community?

- Geographic Area, plus
- Shared issue or characteristic
  - Shared social or economic interest
  - Impacted by city or county policies
- Tell us “your community’s story”

## 2<sup>nd</sup> Question: Would this community benefit from being “included within a single district for purposes of its effective and fair representation”?

- Or would it benefit more from having multiple representatives?

Definitions of Communities of Interest may not include relationships with political parties, incumbents, or political candidates.

# Public Mapping and Map Review Tools

---

- Different tools for different purposes
- Different tools for different levels of technical skill and interest
  - Simple “review draft maps” tool
  - Easy-to-use “Draw your neighborhood” tool
  - Paper- and Excel-based simple “Draw a draft map” tools
  - Powerful, data-rich “Draw a draft map” tool

Whether you use the powerful (but complicated) online mapping tool, Excel, the paper kit, or just draw on a napkin, we welcome your maps!

# Simple Map Drawing Tool

## Paper "Public Participation Kit"

- For those without internet access or who prefer paper
- Total Population Counts only – with or without demographic numbers (available on Story Map)

### City of Orange - Redistricting 2021 One Page Kit

The indicated numbers are the total population of each "population unit."

Each of the six districts should each have approximately equal population. With a total population of 139,911, each district should contain about 23,318 people, with no more than a 2,332 person difference between the largest and the smallest.

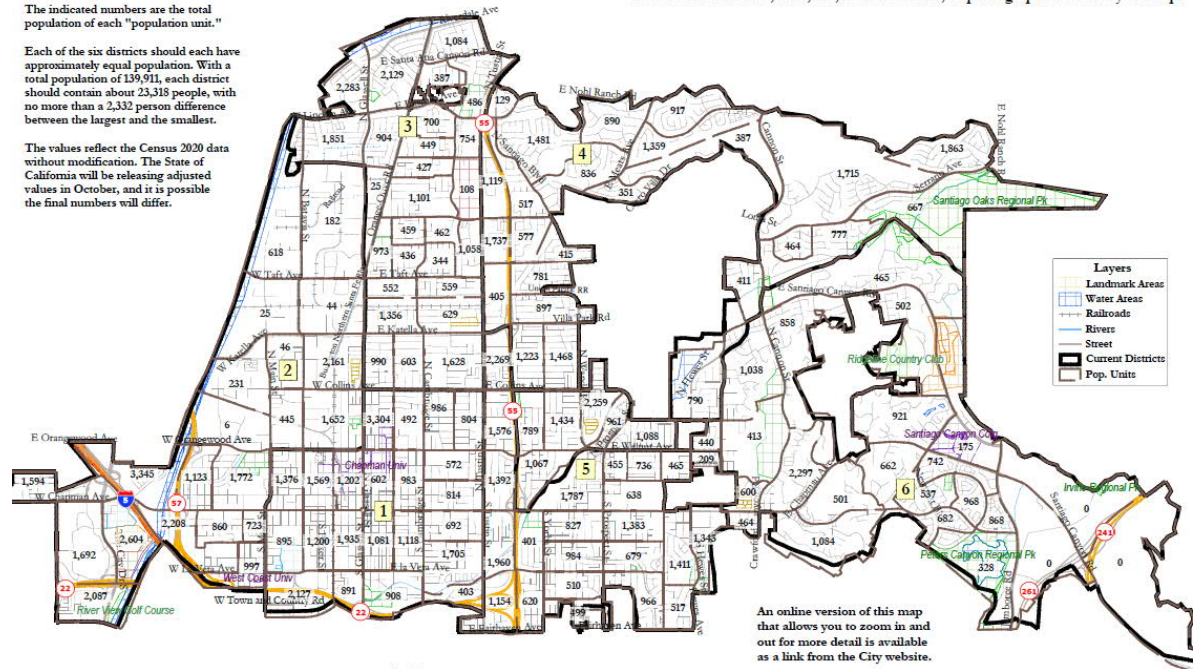
The values reflect the Census 2020 data without modification. The State of California will be releasing adjusted values in October, and it is possible the final numbers will differ.

Please use a thick dark-colored pen to draw your map, then submit it at City Hall or directly to our project consultants:

CityofOrange@NDCresearch.com

PO Box 5271, Glendale, CA 91221

You can hand-deliver, mail, fax, scan and email, or photograph and email your map.



Name: \_\_\_\_\_ Address: \_\_\_\_\_

Phone: \_\_\_\_\_ Email: \_\_\_\_\_

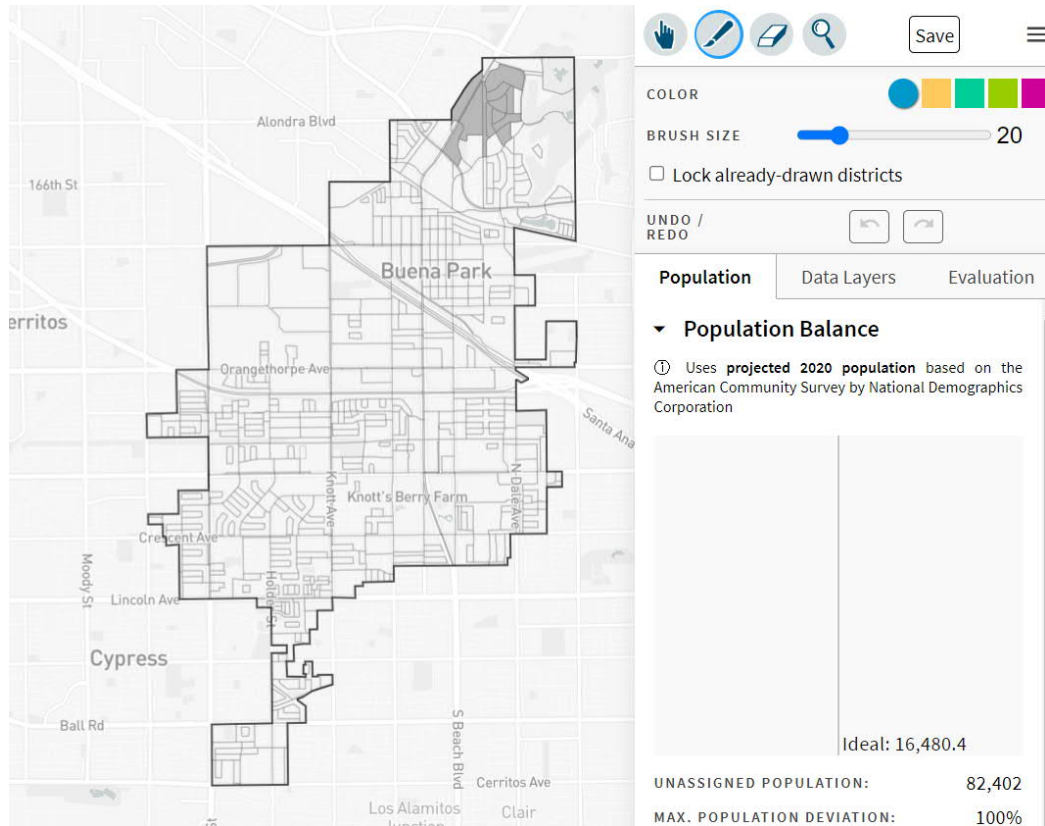
Oct 13, 2021



# DistrictR

DistrictR to draw a “community of interest” or a full district map.

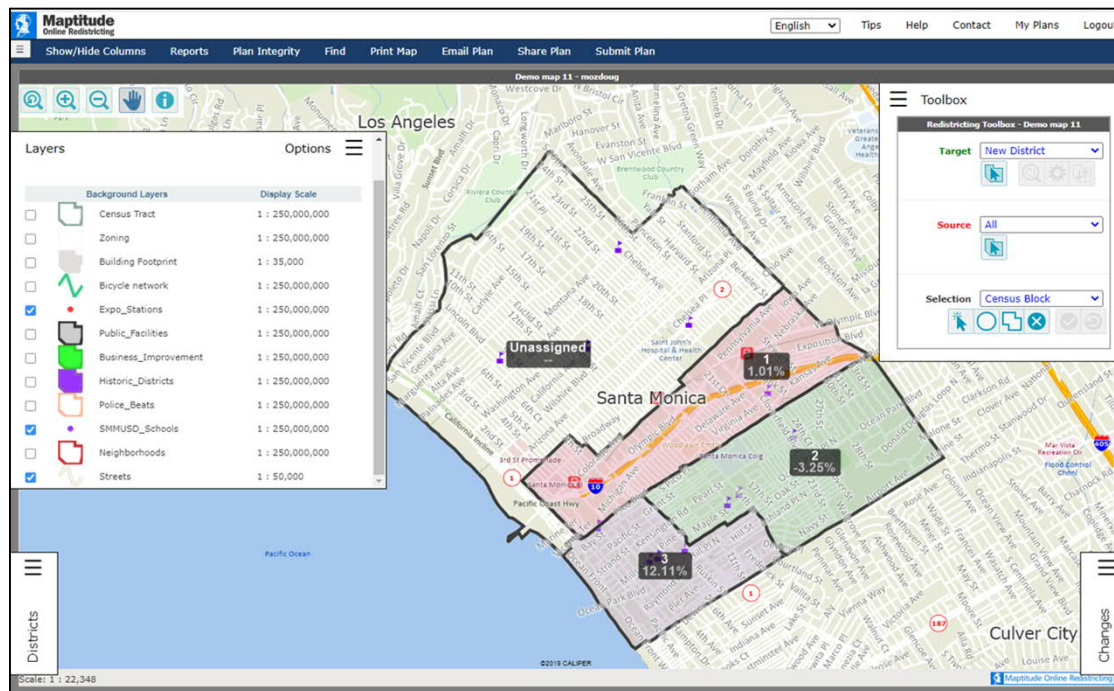
- Also includes simple district-mapping tool
- Similar external options: [Representable.org](https://representable.org), [DrawMyCACommunity.org](https://drawmycacommunity.org)



# Caliper's "Maptitude Online Redistricting"

## Full Database, Powerful Online Mapping Tool

- Powerful, common, data-rich online tool
- Six language options: English, Spanish, Portuguese, Vietnamese, Mandarin and Korean
- [Quick Start Guide](#)



# Public Hearing

---

What is your neighborhood and what are its boundaries?

What other notable areas are in the City, and what are their boundaries?

Discussion to identify areas that meet each AB 849 definition:

- “neighborhoods”
- “communities of interest . . . that should be included within a single district for purposes of its effective and fair representation.”

# Share Your Thoughts / Continue Engagement



The screenshot shows the City of Orange website. At the top is the City of Orange logo with a green leaf icon. To the right is a 'Select Language' dropdown and a search bar. Below the header is a navigation menu with links: Welcome, Schedule, Draft Maps, Draw A Map, FAQ, Resources, and Contact. The main content area is titled 'The Redistricting Process' in blue. It contains three paragraphs of text and a circular seal on the right. The seal features an orange fruit and the text 'CITY OF ORANGE', 'INCORPORATED', 'APRIL 6, 1889', and 'ORANGE COUNTY CALIFORNIA'. Below the paragraphs is a section titled 'How to participate?' in blue, followed by a paragraph and a bulleted list of three items.

**The Redistricting Process**

The City of Orange is asking for your help to plan and draw new City districts.

Every 10 years, local governments use new data from the Census to redraw their district lines to reflect how local populations have changed. State law requires cities and counties to engage communities in the redistricting process by holding public hearings and doing public outreach, including to underrepresented and non-English-speaking communities.

The final map created through the redistricting process will define Orange's City Council district boundaries for the next 10 years. There are many ways to participate in redistricting and we invite you to get involved!

**How to participate?**

Share your specific thoughts, draw a map, or attend an upcoming workshop to get involved!

- Submit written testimony about the process or a specific map to [cminfo@cityoforange.org](mailto:cminfo@cityoforange.org).
- [Click here](#) to see the calendar of workshops and public hearings at which you can speak about the process or a specific map.
- [Click here](#) for information on drawing and submitting maps.

Come to the Next Hearing: **December 14, 2021**

Website: [Draw Orange \(orangedistricts.org\)](https://orangedistricts.org)

Email: [cminfo@cityoforange.org](mailto:cminfo@cityoforange.org)