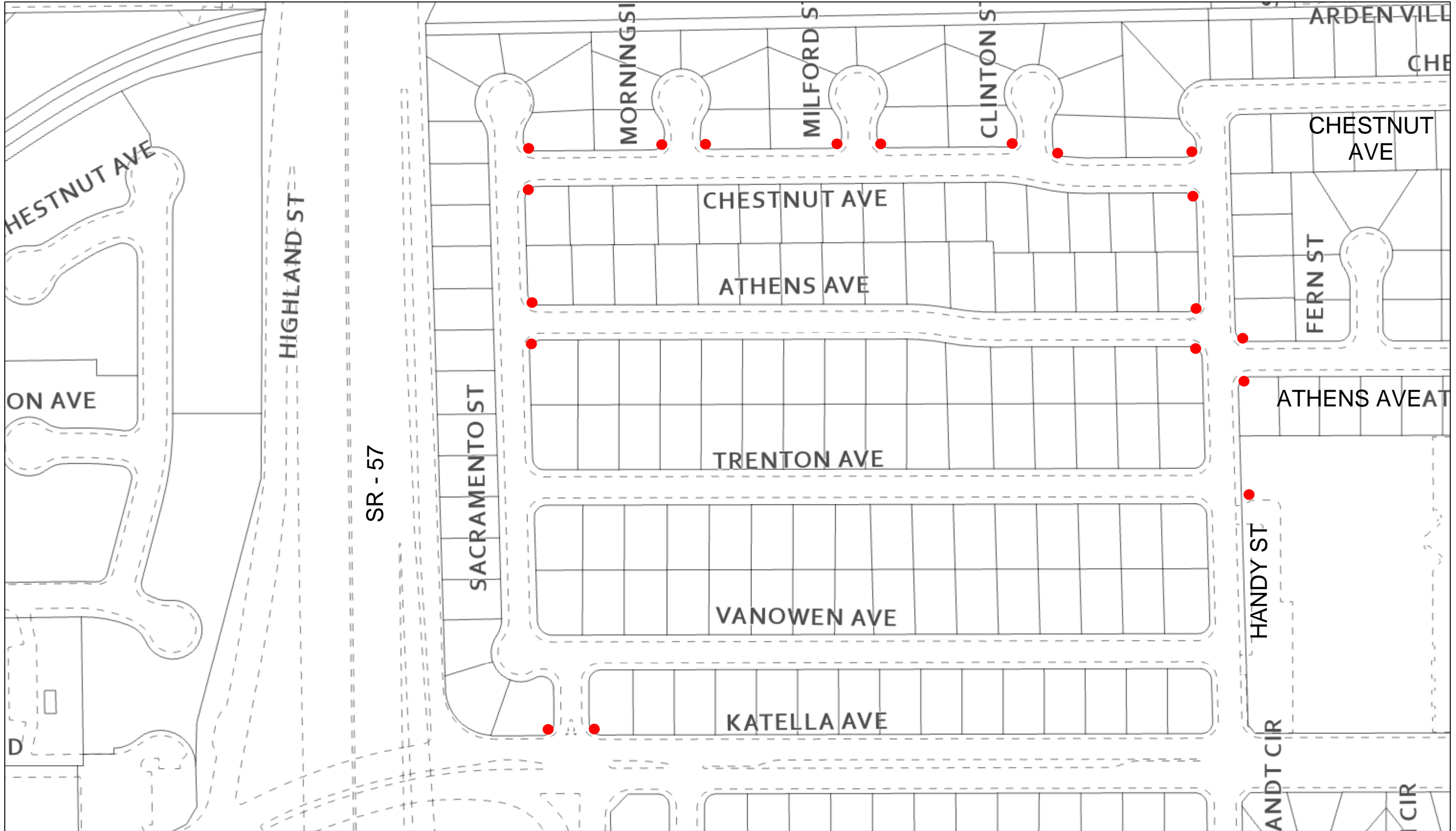


Location Map



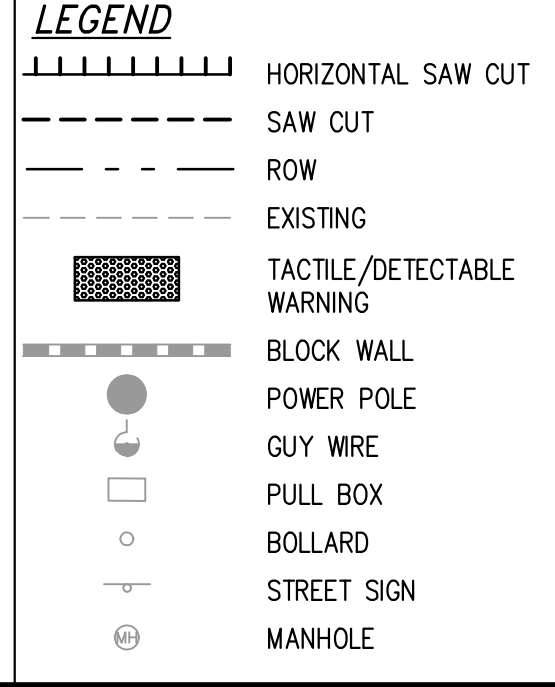
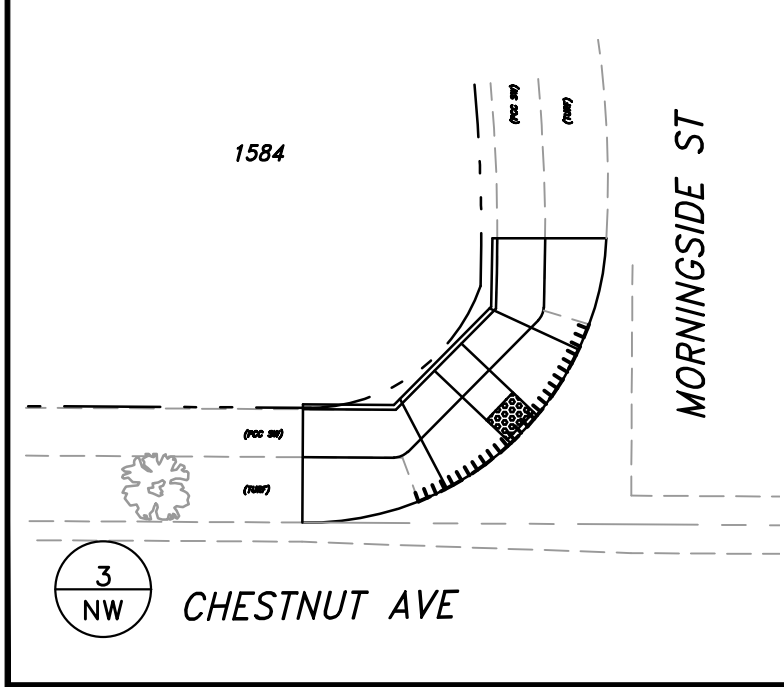
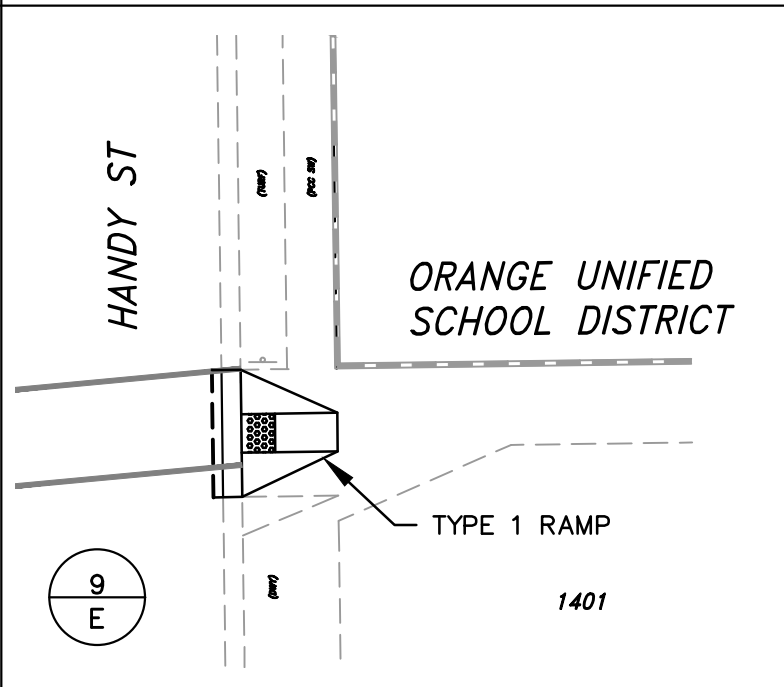
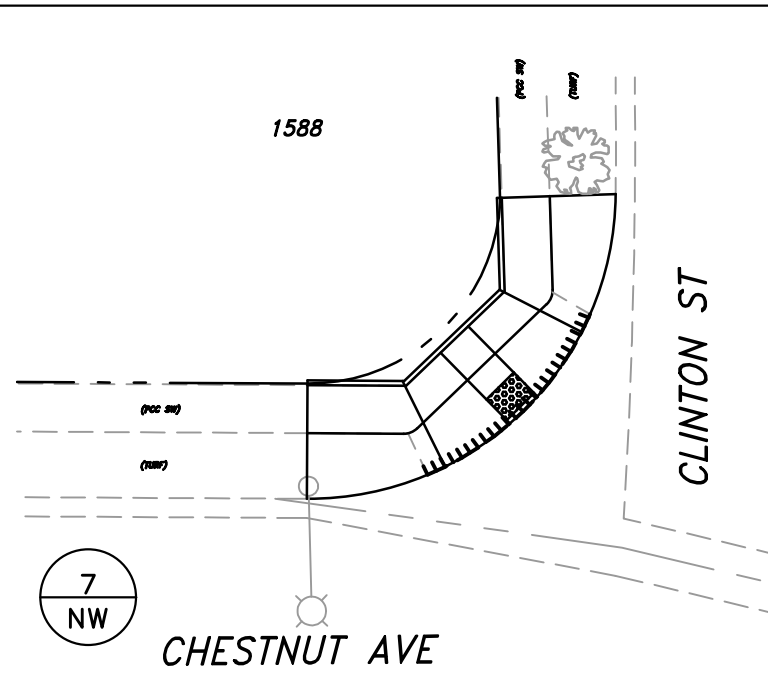
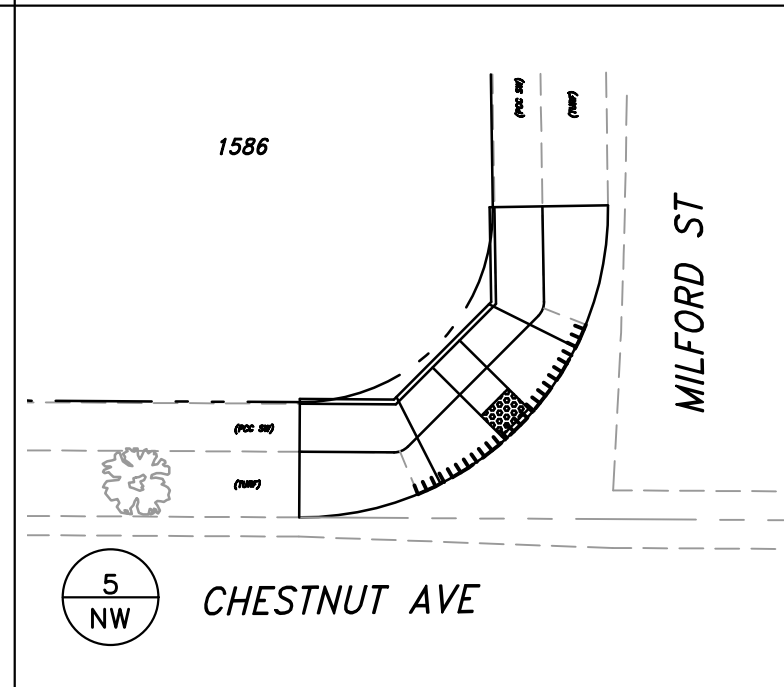
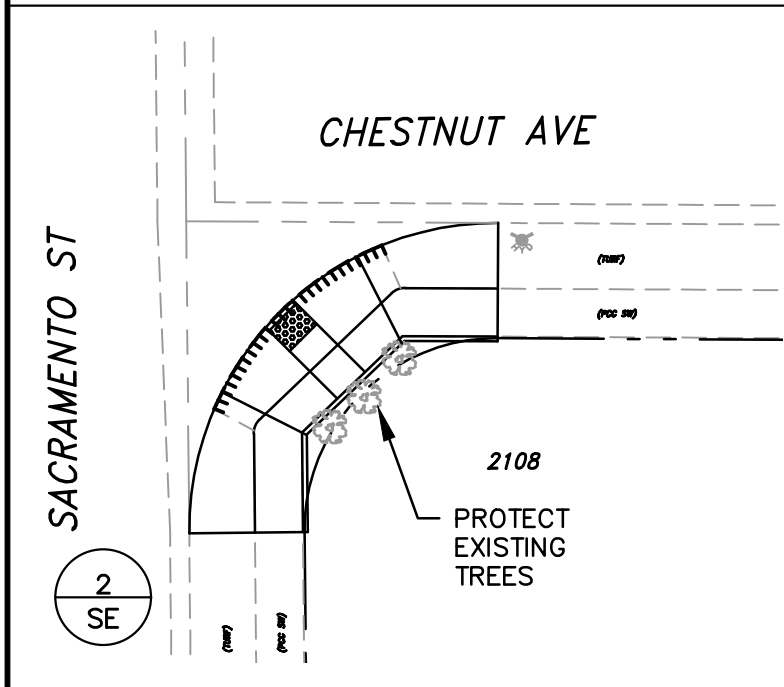
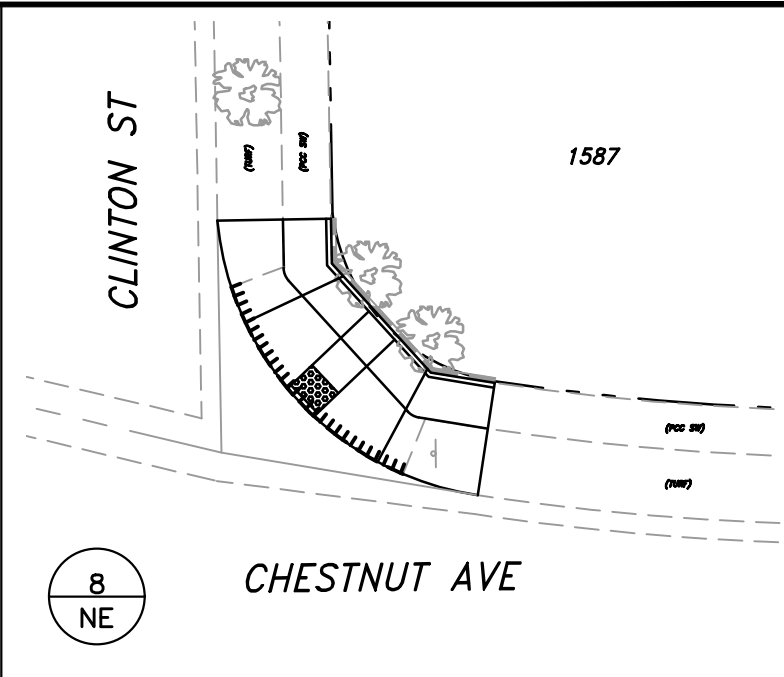
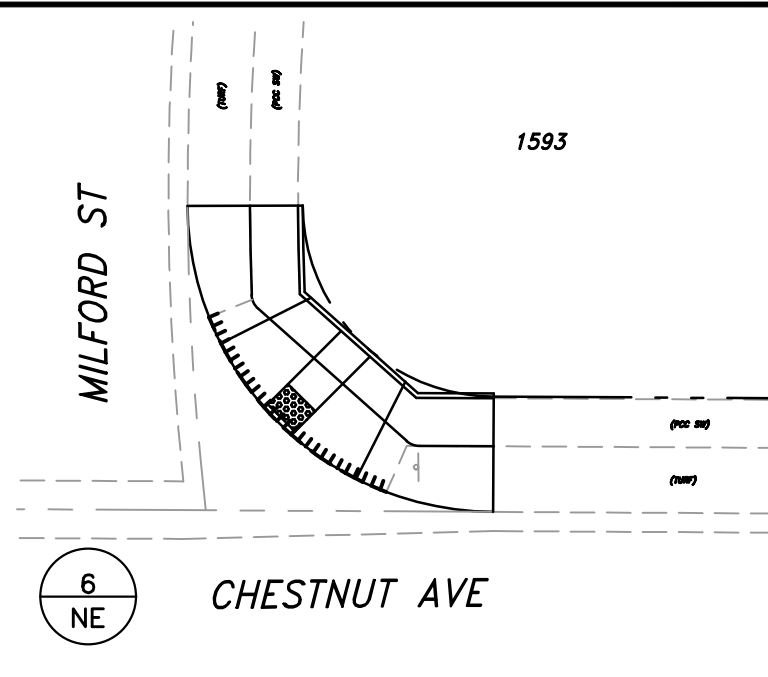
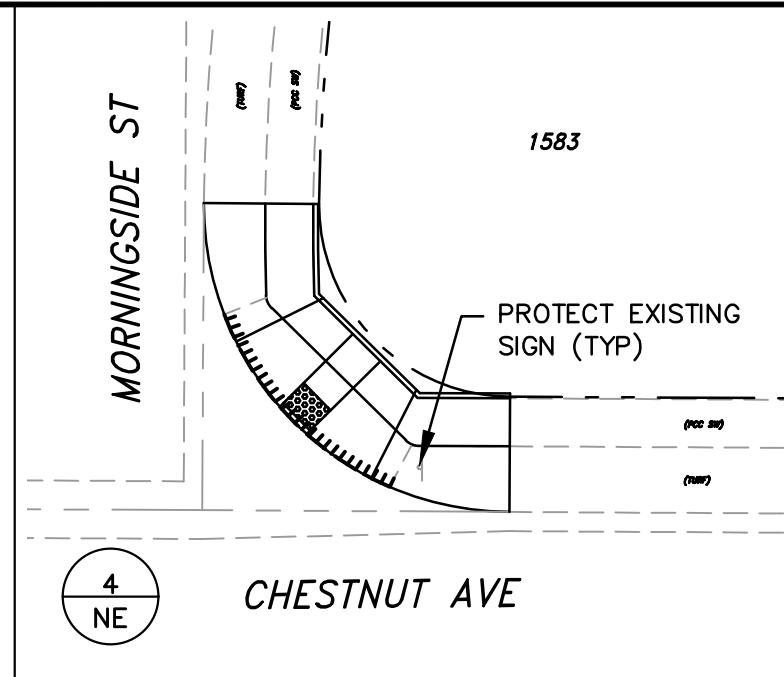
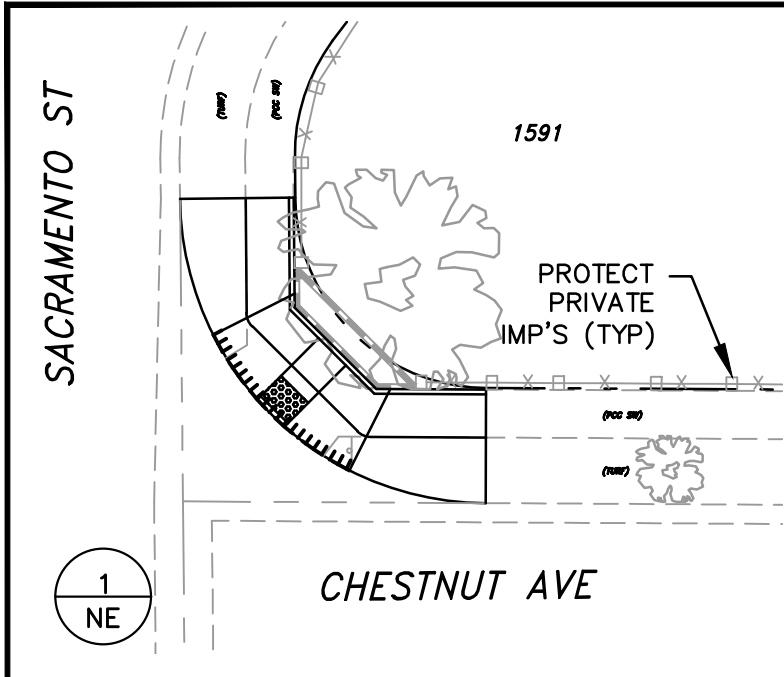
6/1/2021, 4:51:25 PM

CDBG ADA FY 21-22

19 RAMPS THIS SHEET

● ADA RAMP RECONSTRUCTION





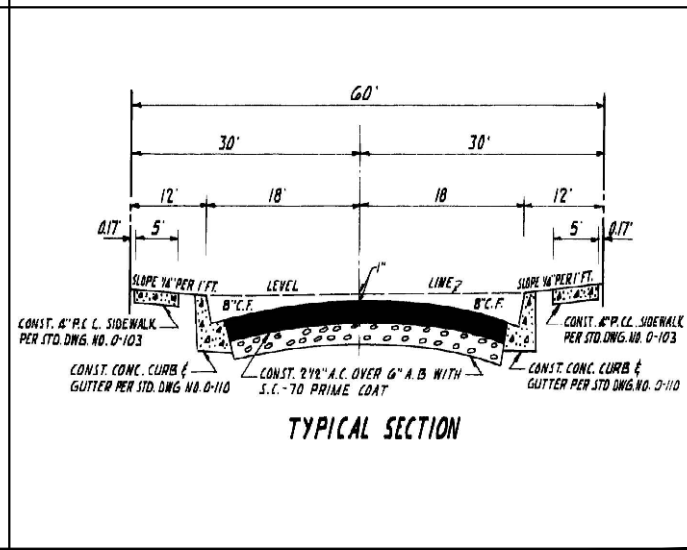
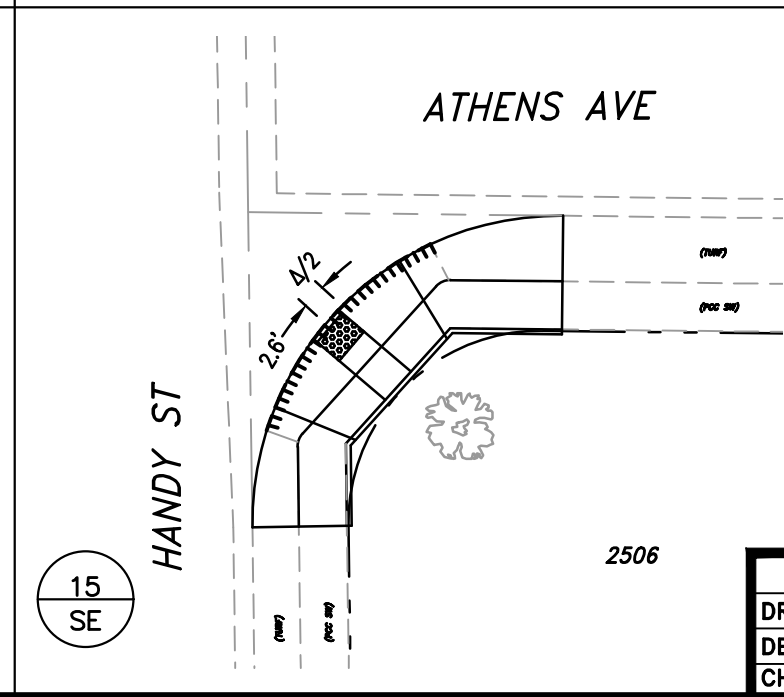
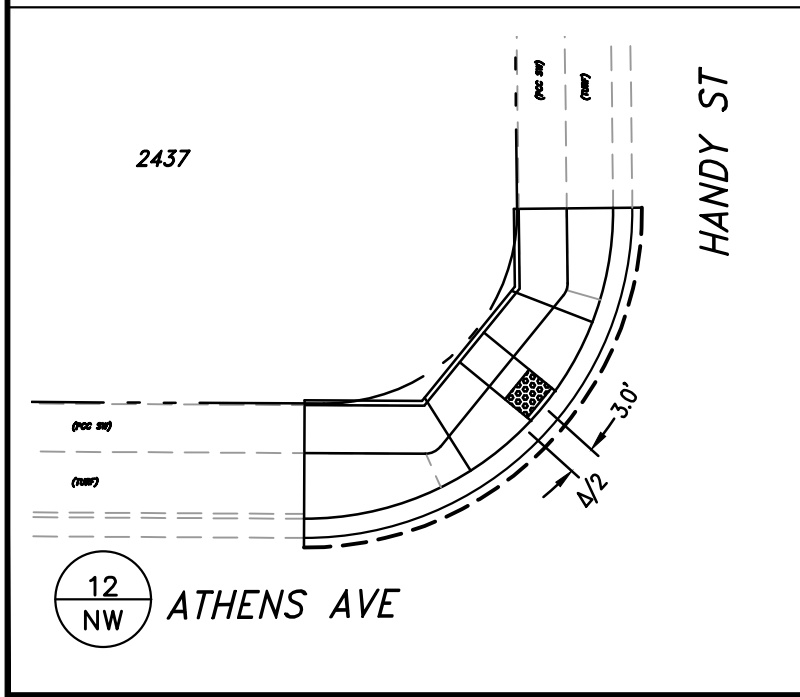
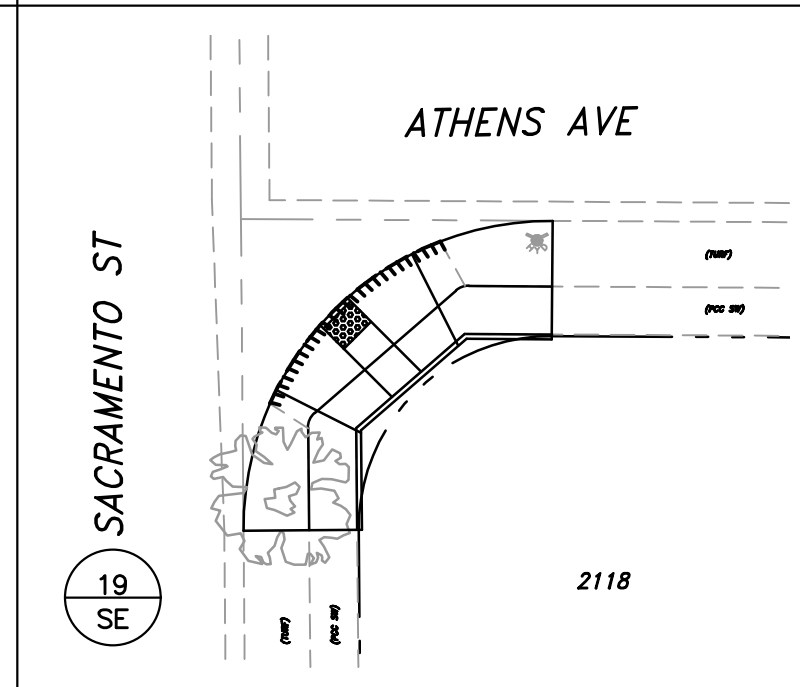
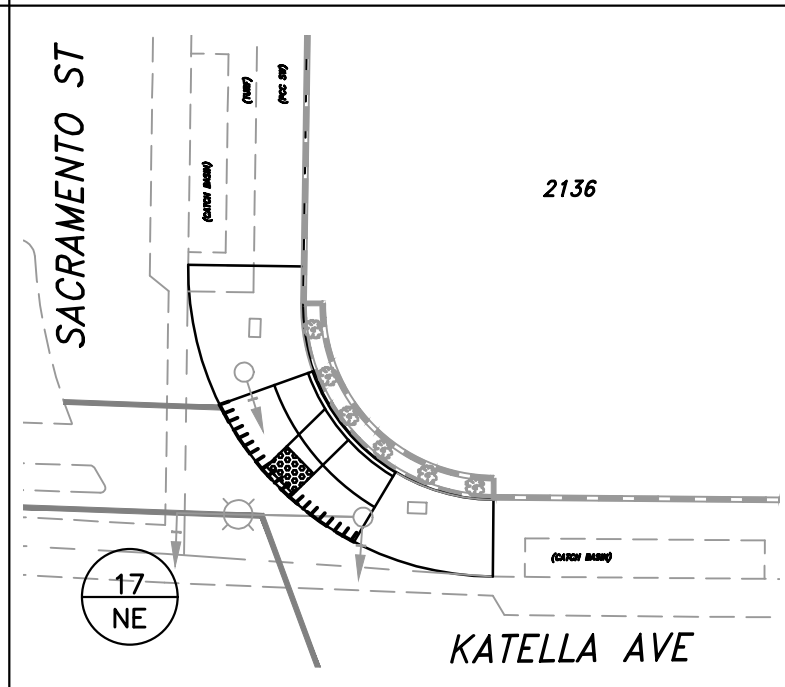
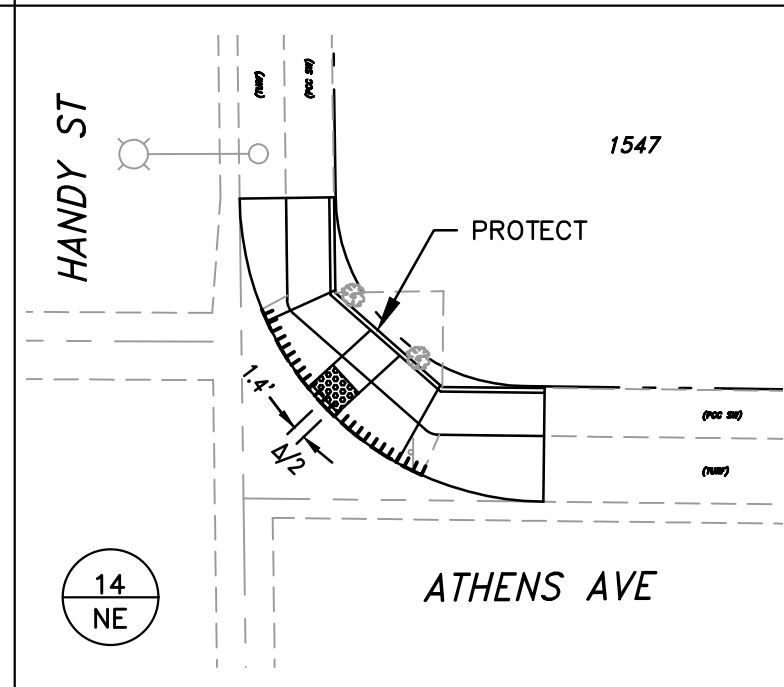
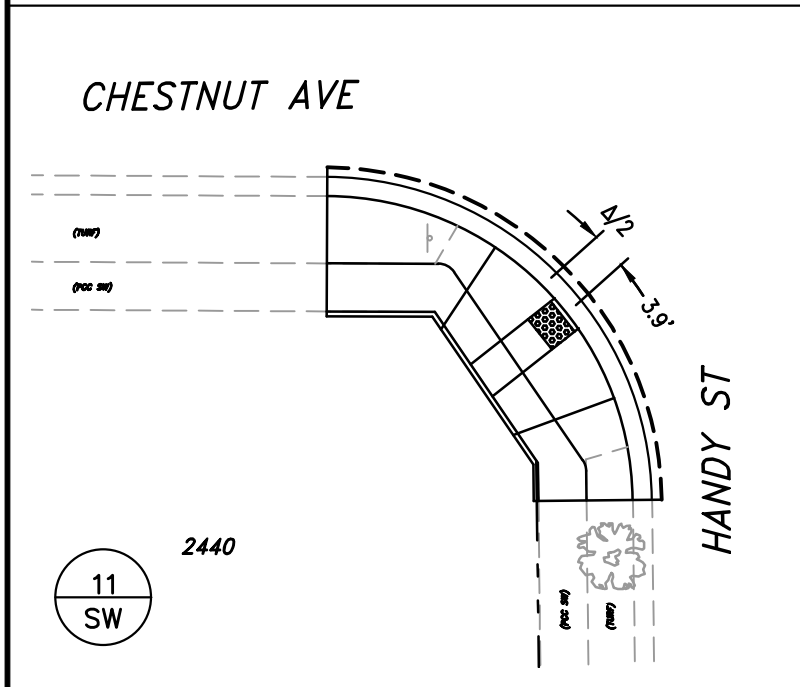
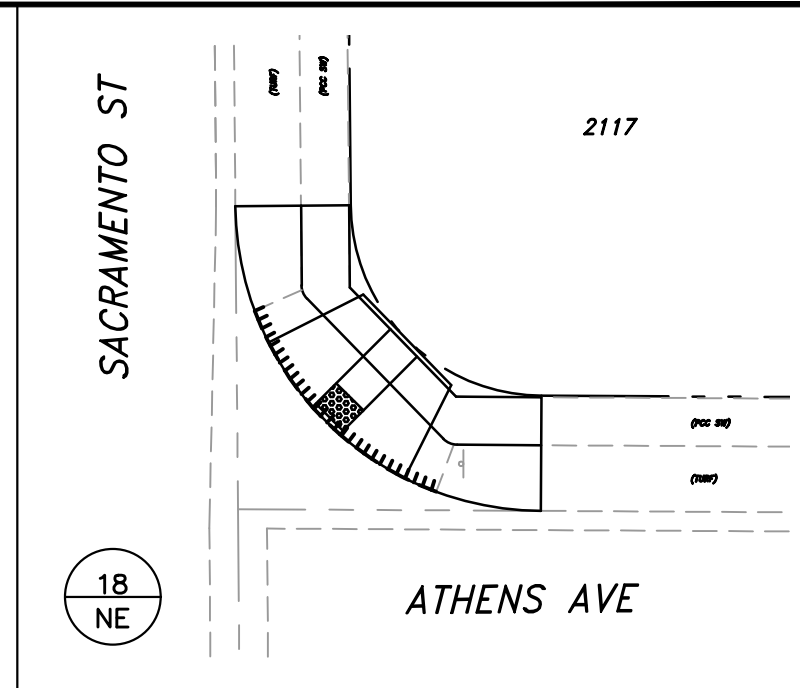
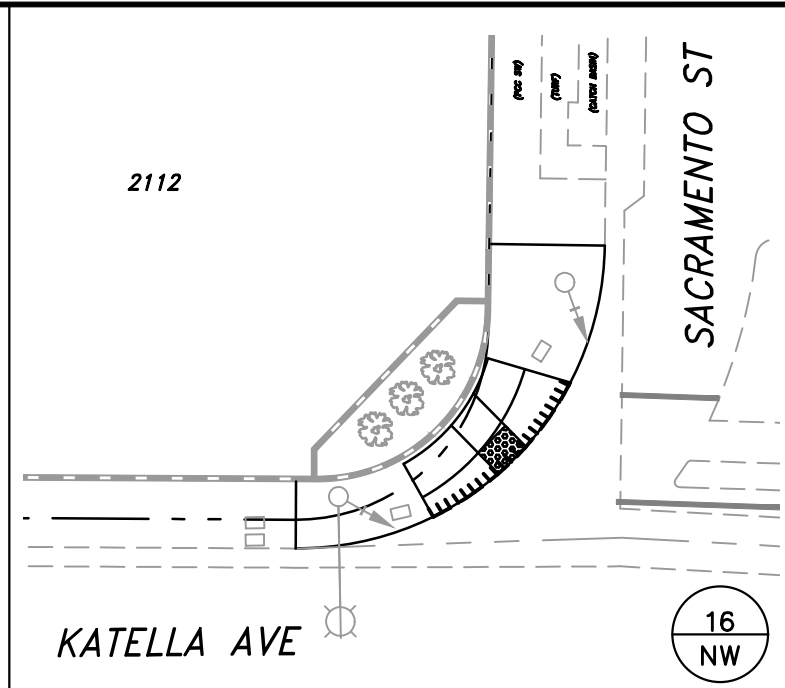
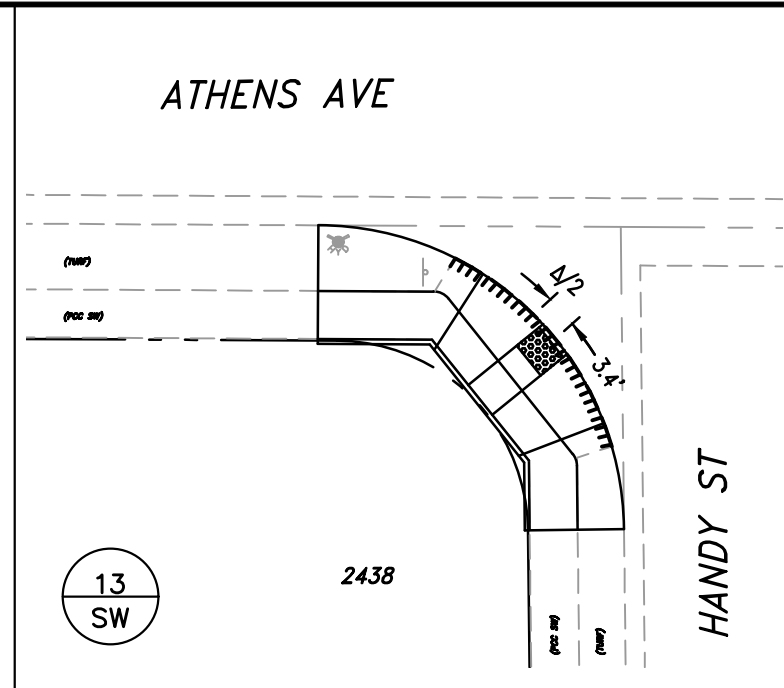
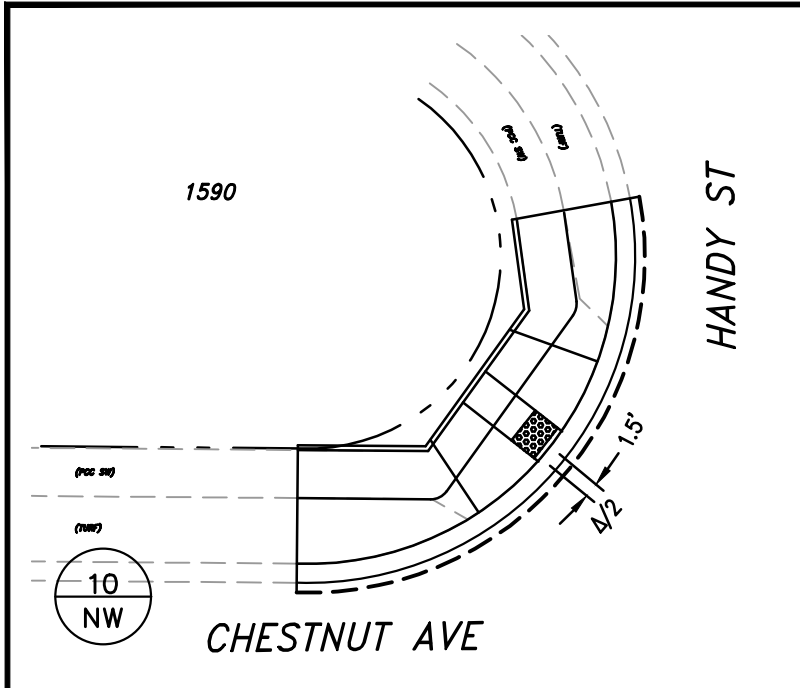
- NOTES:**
1. RAMP LAYOUT SHOWN IS CONCEPTUAL (TYPE 2, FROM BCR TO ECR, UNLESS OTHERWISE SHOWN). FINAL LAYOUT WILL BE COORDINATED IN THE FIELD WITH THE ENGINEER OR INSPECTOR BASED ON FIELD CONDITIONS. GRADES WILL DICTATE FINAL LAYOUT.
 2. INSTALL RETAINING CURB AS NEEDED.
 3. RAMPS SHALL BE CONSTRUCTED PER CITY OF ORANGE STANDARD PLAN NO. 121.
 4. ALL GRADING SHALL BE 4:1 TO DAYLIGHT AND SHALL BE COMPLETED BEFORE PLACEMENT OF CONCRETE.
 5. IRRIGATION RELOCATION OR REPAIRS SHALL BE COMPLETED WITHIN 48 HOURS.
 6. LANDSCAPE REPAIR WILL BE COMPLETED AT THE AGREED UPON SCHEDULE.
 7. CENTER OF RAMP LOCATED AT $\Delta/2$ UNLESS OTHERWISE SHOWN.
 8. SEE SHEET 2 FOR TYPICAL SECTION.

CITY OF ORANGE
OFFICE OF THE CITY ENGINEER

IMPROVEMENTS PLAN
CDBG FY 21-22
ADA RAMP IMPROVEMENTS
LOCATIONS 1 TO 9

DRAWN	CM	DATE	08/11/21	SCALE:	HORIZ. 1"=20' VERT. N/A	F.B. _____ PG. _____	SHEET 1 OF 2 SHEETS
DESIGNED	CM	CHECKED	RN	SP-4177			

N: Public Works Engineering Design Projects SP-4177 CDBG FY 21-22 ADA Ramp/VA Engineering Drawings SP-4177 CDBG FY 21-22 ADA.dwg
 By: Christopher Mulla on 8/11/2021 4:37 PM



CITY OF ORANGE
OFFICE OF THE CITY ENGINEER
IMPROVEMENTS PLAN
CDBG FY 21-22
ADA RAMP IMPROVEMENTS
LOCATIONS 10-19

SCALE:	HORIZ. 1"=20'	F.B. _____	PG. _____	SHEET 2 OF 2 SHEETS
VERT. N/A				
DRAWN	CM	DATE	08/11/21	
DESIGNED	CM	DATE	08/11/21	
CHECKED	RN	DATE	08/11/21	
				SP-4177

N: Public Works Engineering Design\Projects\SP-4177 CDBG FY 21-22 ADA Ramp\01_Engineering Drawings\SP-4177 CDBG FY 21-22 ADA.dwg
 By: Christopher Mulla on 8/11/2021 4:37 PM