

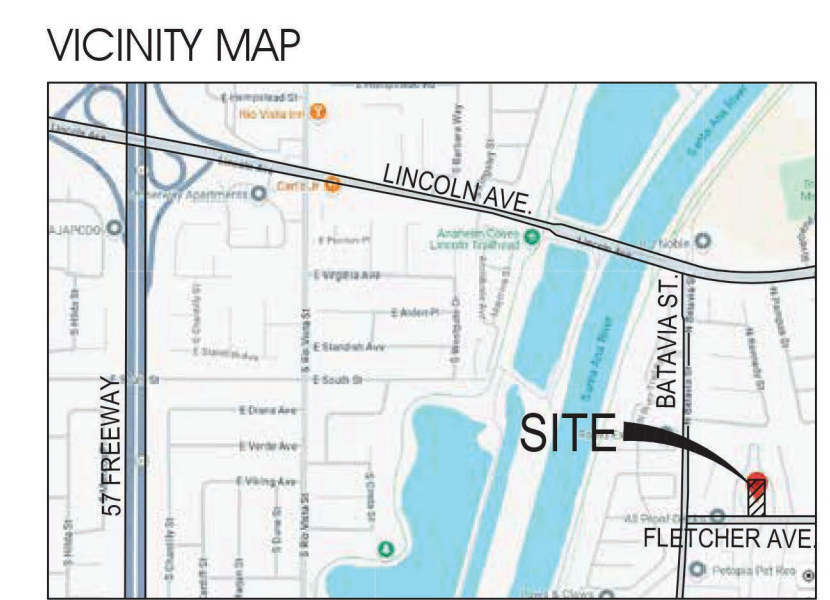


**NOTE**

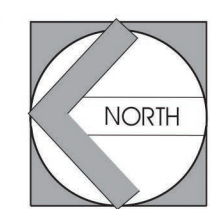
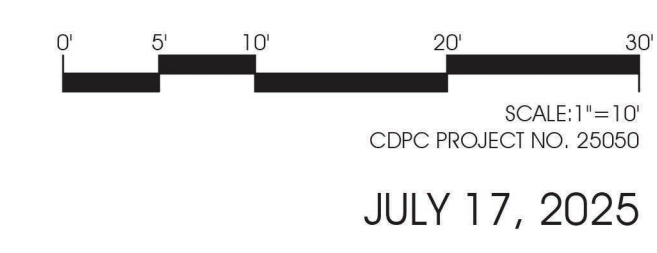
THE IRRIGATION SYSTEM DESIGN WILL UTILIZE LOW VOLUME, HIGH EFFICIENCY BUBBLERS, MP ROTATORS & LOW VOLUME SPRAY HEADS TO REDUCE OVERALL WATER CONSUMPTION AND INCREASE EFFICIENCY. THIS PROVIDING AN ENVIRONMENTALY CONSCIOUS THROUGH THE USE OF WATER CONSERVATION PRINCIPLES.

NO EXISTING TREES ON SITE.

SITE AREA: 31,200 S.F.  
 HOA MAINTAINED LANDSCAPE AREA: 3,496 S.F.  
 HOMEOWNER PRIVATE YARD AREA: 4,455 S.F.  
 TOTAL PROPOSED LANDSCAPE AREA: 7,951 S.F. (25%)



**CONCEPTUAL LANDSCAPE PLAN**  
**FLETCHER 15**  
 705-715 W Fletcher Ave, Orange, CA 92865

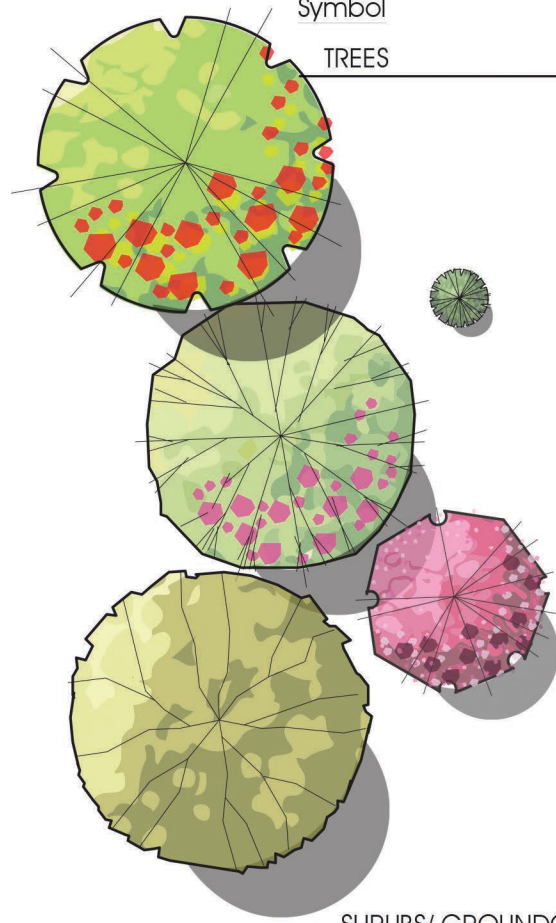


conceptual design + planning company  
 1475 Scenic Drive, Suite 200  
 Costa Mesa, CA 92626  
 T: 949.399.0870  
 www.cdpc.com  
 COSTA MESA • CENTRAL COAST • LAS VEGAS



**PLANT PALETTE**

(Sunset Zone 22)  
Symbol



TREES	Botanical Name	Common Name	WUCOLS (Region 4)	SIZE
	<i>Aibutus x 'Marina'</i>	Marina Strawberry Tree	Low	24" Box
	<i>Cupressus s. 'compacta'</i> Small Vertical Tree	Dwarf Italian Cypress	Low	24" Box
	<i>Lagerstroemia l. X 'Tuscarora'</i>	Tuscarora Crape Myrtle	Mod	36" Box
	<i>Leptospermum 'Dark Shadows'</i>	Dark Shadows Tea Tree	Low	24" Box
	<i>Olea europaea 'Wilsonii'</i>	Fruitless Olive	Low	36" Box

TREES



*Aibutus 'Marina'* (Standard) Marina Strawberry Tree | *Cupressus s. 'Compacta'* Dwarf Italian Cypress | *Lagerstroemia hybrid 'Tuscarora'* Tuscarora Crape Myrtle | *Leptospermum 'Dark Shadows'* Dark Shadows Tea Tree | *Olea europaea 'Wilsonii'* Wilson Fruitless Olive

SHRUBS/ GROUNDCOVERS

	<i>Agave Moonshine</i>	Moonshine Agave	Low	5 Gal.
	<i>Aloe Blue Elf</i>	Blue Elf Aloe	Low	5 Gal.
	<i>Anigozanthos flavidus 'yellow'</i>	Yellow Kangaroo Paw	Low	5 Gal.
	<i>Bulbine frutescens 'Hallmark'</i>	Orange Stalked Bulbine	Low	5 Gal.
	<i>Callistemon viminalis 'Little John'</i>	Dwarf Bottlebrush	Low	5 Gal.
	<i>Caissa macrocarpa 'Green Carpet'</i>	Dwarf Natal Plum	Low	5 Gal.
	<i>Dianella revoluta 'Little Rev'</i>	Little Rev Flax Lily	Low	1 Gal.
	<i>Festuca glauca 'Siskiyou Blue'</i>	Siskiyou Blue Fescue	Low	1 Gal.
	<i>Grevillea lanigera 'Coastal Gem'</i>	Coastal Gem Woolley Grevillea	Low	5 Gal.
	<i>Hesperaloe parviflora</i>	Red Yucca	Low	5 Gal.
	<i>Lavandula stoechas 'Otto Quast'</i>	Spanish Lavender	Low	5 Gal.
	<i>Muhlenbergia capillaris 'Pink Muhly'</i>	Pink Muhly Grass	Low	5 Gal.
	<i>Myoporum parvifolium</i>	Myoporum	Low	5 Gal.
	<i>Myrtus communis 'Compacta'</i>	Dwarf Myrtle	Low	5 Gal.
	<i>Rosmarinus o. 'Huntington Carpet'</i>	Huntington Carpet Rosemary	Low	5 Gal.
	<i>Salvia greggii 'Flame'</i>	Flame Autumn Sage	Low	5 Gal.
	<i>Westingia 'Blue Gem'</i>	Blue Gem Coast Rosemary	Low	15 Gal.

TURF

Synthetic Pet Turf

NOTES:

PLANT MATERIAL NOT LISTED MAY BE USED, SUBJECT TO APPROVAL BY THE CITY.  
ALL LANDSCAPE PLANS AND INSTALLATIONS SHALL ADHERE TO CITY DESIGN GUIDELINES, CODES AND REGULATIONS.  
ALL LANDSCAPE AREAS SHALL RECEIVE AN AUTOMATIC IRRIGATION SYSTEM.  
ALL LANDSCAPE INSTALLATIONS SHALL BE PERMANENTLY MAINTAINED.

SHRUBS AND GROUND COVERS



*Agave attenuata* Fox Tail Agave | *Aloe Blue Elf* Blue Elf Aloe | *Anigozanthos 'Yellow'* Yellow Kangaroo Paw | *Bulbine frutescens 'Hallmark'* Orange Stalked Bulbine | *Callistemon viminalis 'Little John'* Dwarf Bottlebrush | *Caissa macrocarpa 'Green Carpet'* Dwarf Natal Plum | *Dianella revoluta 'Little Rev'* Little Rev Flax Lily | *Festuca 'Siskiyou Blue'* Siskiyou Blue Fescue



*Grevillea lanigera 'Coastal Gem'* Coastal Gem Grevillea | *Hesperaloe parviflora* Red Yucca | *Lavandula stoechas 'Otto Quast'* Spanish Lavender | *Muhlenbergia capillaris* Pink Muhly Grass | *Myoporum parvifolium 'Pink'* Dwarf Pink Myoporum | *Myrtus communis 'Compacta'* Dwarf Myrtle | *Rosmarinus o. 'Huntington Carpet'* Huntington Carpet Rosemary | *Salvia greggii 'Furman's Red'* Furman's Red Autumn Sage | *Westingia fruticosa 'Blue Gem'* Blue Gem Coast Rosemary